



Multimodality

Asset Design &  
Modularity

# Multimodal container for bulk and pallets



Funded by the  
European Union

This project has received funding from the European Union's Horizon Europe research and innovation programme under grant agreement No 101069796

Developed by :



Project by :



MultiRELOAD  
PORT SOLUTIONS FOR SUSTAINABLE MOBILITY

Operational fields

Technologies

Solutions



# MULTIMODAL CONTAINER FOR BULK AND PALLETS

Multimodality

Asset Design & Modularity



MultiRELOAD  
PORT SOLUTIONS FOR SUSTAINABLE MOBILITY



## Solution description

Innovative multimodal containers enable easy transfer of bulk goods, such as grain, fertiliser and chemicals, by road, rail and inland waterways.

They can be loaded from the top for bulk materials and from the front for palletised products.

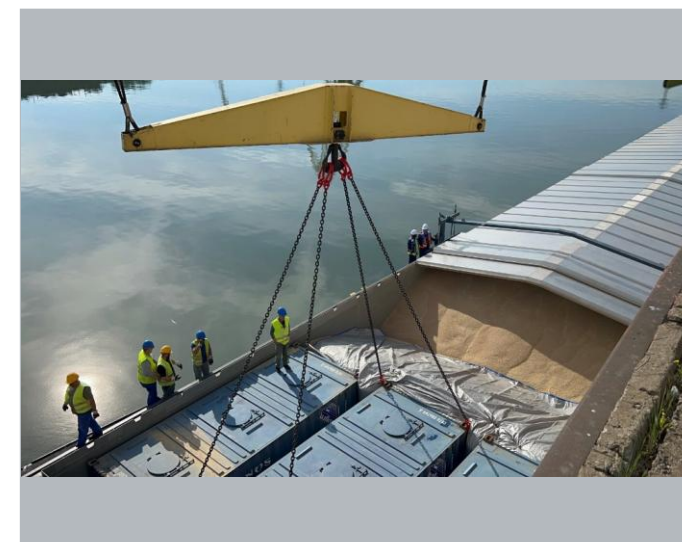
Thanks to their pallet-wide design, they fit standard Euro pallets and are therefore suitable for almost any type of cargo.



## Benefits

- **Flexibility & accessibility:** Increased operational flexibility and access to intermodal solutions.
- **Efficiency & cost savings:** Improved operations, cost efficiency, and reliability.
- **Sustainability & labour:** Environmental benefits and better working conditions.
- **Innovation & collaboration:** Support for innovative supply chains and shared solutions.

Main beneficiary:  
**FORWARDERS**



Technology readiness level : 9  
Implementation stage : **Market-Ready**

Operational fields

Technologies

Solutions



# MULTIMODAL CONTAINER FOR BULK AND PALLETS

Multimodality

Asset Design &  
Modularity



MultiRELOAD  
PORT SOLUTIONS FOR SUSTAINABLE MOBILITY

Watch the video to explore  
the solution in action



LET'S DISCUSS  
5 June at 15:30  
ALICE BOOTH A3.400



Would you like to know more?  
Take contact :



Herfried LEITNER  
Managing Director



Lerchengasse 1-5/2/8,  
2103 Langenzersdorf | Austria



herfried.leitner@tts-group.com



+43 664 735 80820

[www.tts-group.ro](http://www.tts-group.ro)

Operational fields

Technologies

Solutions

