

Long-haul & regional
road transport

Transport planning
and execution



Dynamic Electric Vehicles route planning tool

Developed by :



Project by :



This project has received funding from the European Union's Horizon Europe research and innovation programme under grant agreement No 101192657

Operational fields

Technologies

Solutions



DYNAMIC ELECTRIC VEHICLES ROUTE PLANNING TOOL

Long-haul & regional
road transport

Transport planning
and execution



Solution description

Dynamic Route Planner for Battery Electric Heavy-Duty Vehicles

A smart route planning tool tailored for **electric trucks and trailers**, enabling fleet operators to calculate the **most efficient route and charging strategy** based on live and predictive data.

It uses physical vehicle models, battery condition, load weight, topography, weather, and live traffic to suggest optimal routes- including **stopovers**, **charging station bookings**, and **dynamic re-routing**.

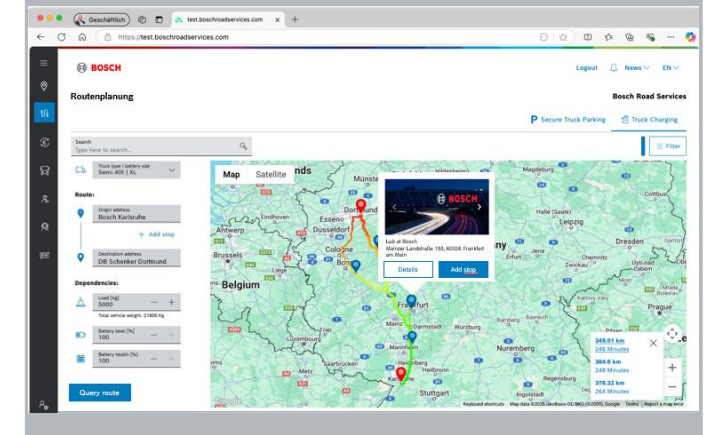


Benefits

- **Optimized, Realistic Route Planning**
Based on topography, distance, battery condition, and cargo weight. Learns from past trips and adjusts plans using real-time data
- **Integrated Charging Strategy**
Identifies available MCS/CCS points along the route and estimates charging duration and energy needs.
- **Seamless Integration via API**
Connects directly to fleet or transport management systems (FMS/TMS) and adapts to vehicle profiles for real-time dispatch optimization.

Main beneficiary:
LOGISTICS SERVICE PROVIDER
and FLEET OWNERS

Route suggestion with SoC indication



Technology readiness level : **8**
Implementation stage : **Pilot**

Operational fields

Technologies

Solutions



DYNAMIC ELECTRIC VEHICLES ROUTE PLANNING TOOL

Long-haul & regional
road transport

Transport planning
and execution



Want to receive insights on
business needs and user
requirements for **ultra-fast
charging infrastructure?**



Share your
contact
details and
we'll get in
touch
with you!

Learn more about
Bosch's EV fleet
management tool



WATCH THE VIDEO!

Would you like to know more?
Take contact :



Alice Scotti
Project Manager - ALICE



Avenue Jacques Brel 38/0 – 1200 Brussels



alice.scotti@etp-alice.eu



+39 346 884 1077

www.etp-logistics.eu/alice-projects/flexmcs/

Operational fields

Technologies

Solutions

