

Industry lead logistics innovation for a more competitive and sustainable industry

The European Technology Platform ALICE

alice

Alliance for
Logistics Innovation
through Collaboration
in Europe



Content

1. Who is ALICE?
2. The vision for ALICE organization
3. ALICE ambition: Support transition to zero emissions logistics in an affordable way
4. Overall structure & activities
5. ALICE value for members
6. How to join



ALICE, Alliance for Logistics Innovation through Collaboration in Europe

not-for-profit association, registered in Brussels, since 2014

Recognized by the European Commission as a *European Technology Platform*¹

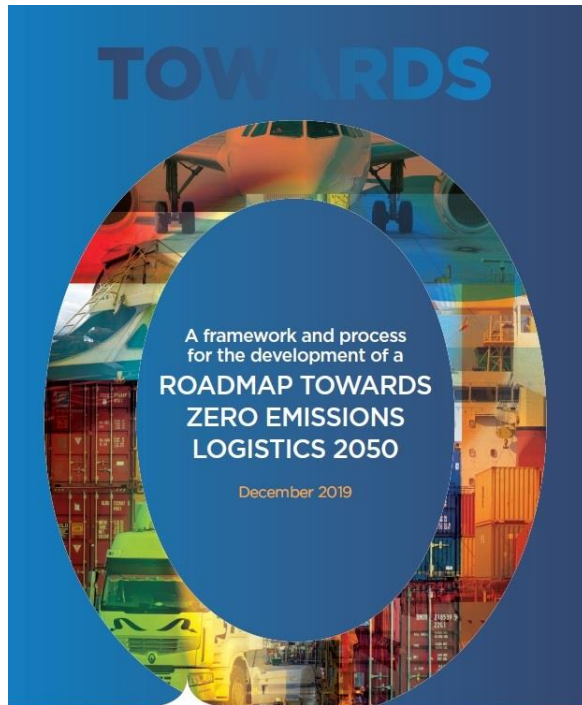
Who is ALICE

1. European Technology Platforms, ETPs are industry-led stakeholder fora that develop short to long-term research and innovation agendas and roadmaps for action at EU and national level to be supported by both private and public funding. More Info on ETPs http://www.etp-logistics.eu/wp-content/uploads/2021/03/Logistic-TP-recognition-SWD_2013_272_F1_STAFF_WORKING_PAPER_EN_V2_P1_735480.pdf

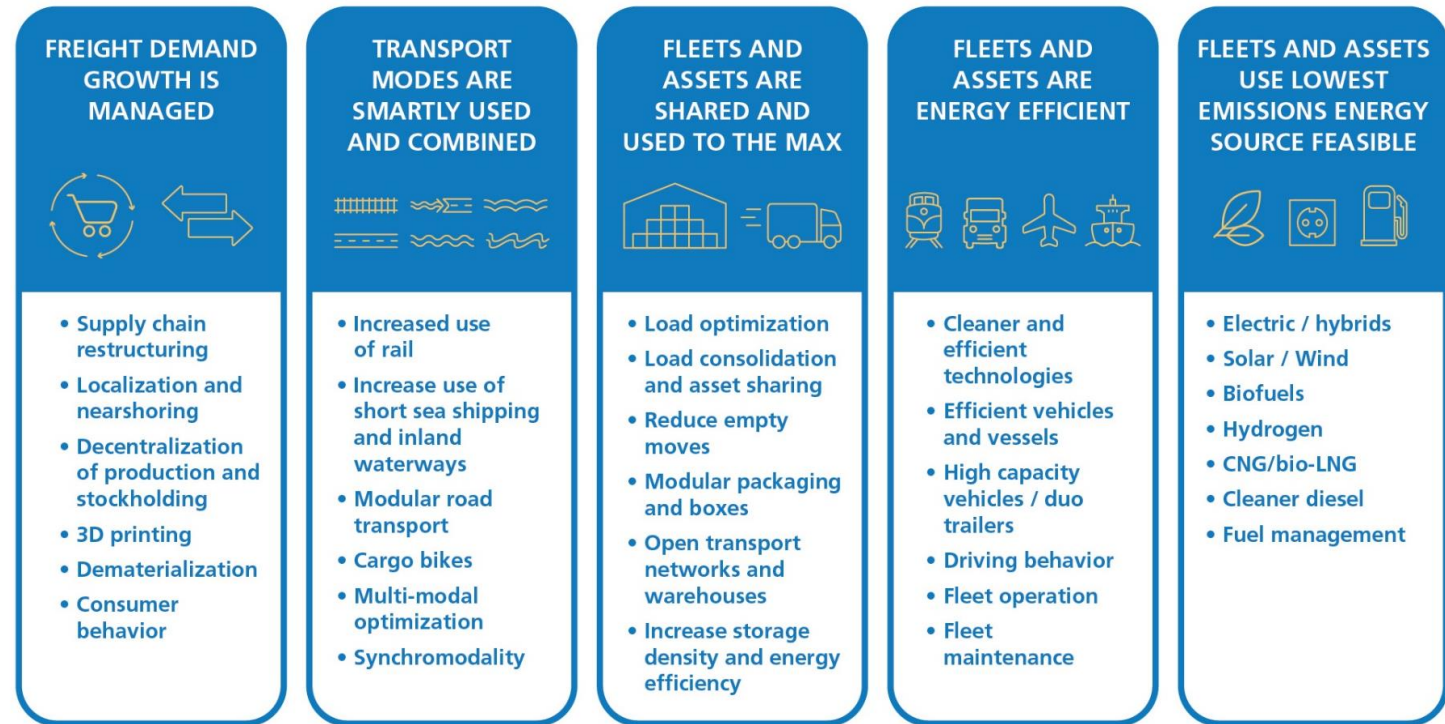
ALICE membership is bringing an holistic approach → All key logistics stakeholders represented!

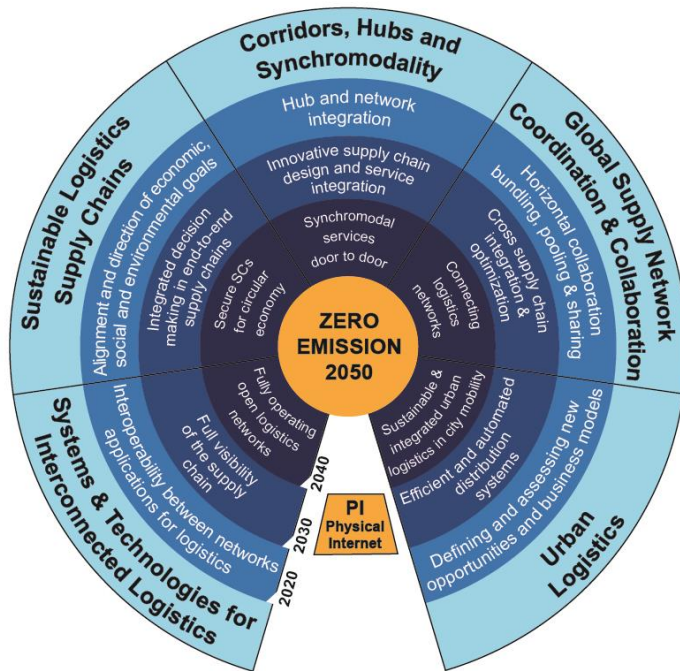
Type of Organization	Members	EU/International Associations
Shippers & Retail		
Logistics Service Providers, Carriers, Courier and Postal operators, Freight Forwarders & Shipping		
Ports, Hubs, Real Estate companies, Intermodal terminals & Transport/Energy Infrastructure		
Transport and industry vehicles, packaging & material handling		
Information and Communication Technologies & Consultancy		
Regional & National Logistics Clusters & Associations		
Research and technology Centers		
European Technology Platforms / PPPs		
Member States and innovation Funding*		

*Involved in ALICE Mirror Group



[Link to the document](#)



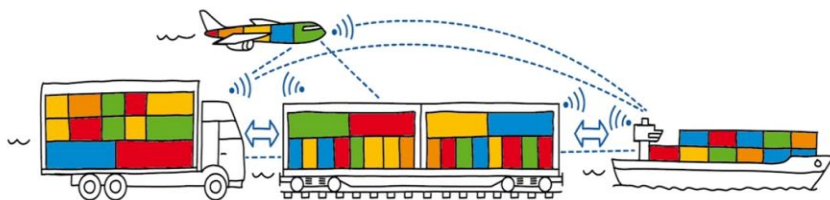


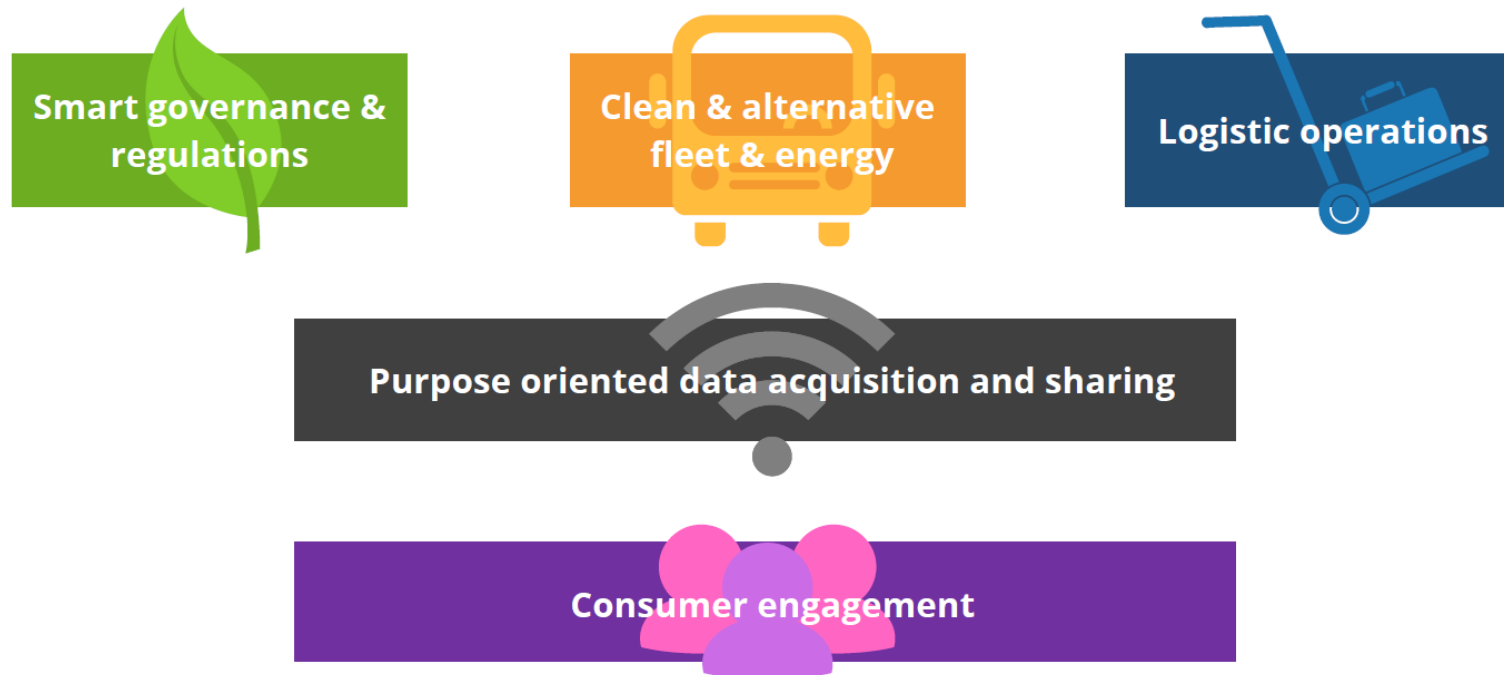
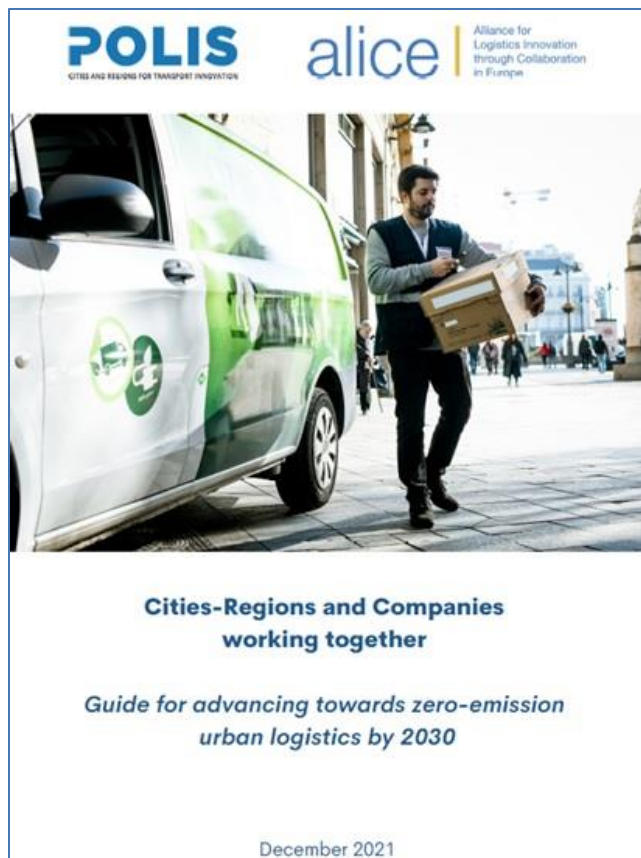
ALICE VISION: freight transport and logistics is climate neutral and zero emission. Physical Internet paves the way to achieve this transition in an affordable way

- **Physical Internet (PI)** enables seamless access to resources and assets in open, connected and shared networks
- Enabling companies to seamlessly consolidate flows and increase assets utilization.
- PI includes transport, storage and physical handling operations of load units.
- It brings **efficiency, resilience and agility** = savings invested in vehicles and energy transition.
- PI concepts can **deliver results in the critical next 10 years**

THE PHYSICAL INTERNET

Interconnected logistics networks, sharing assets and capabilities





ALICE vision, mission, roadmaps and Thematic Groups

ALICE Thematic groups (TGs) and link to roadmaps

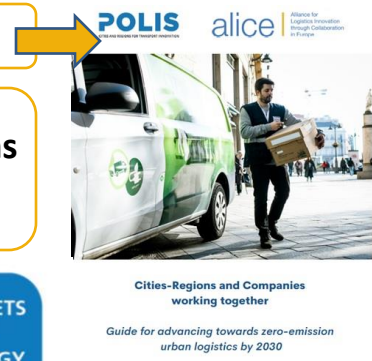
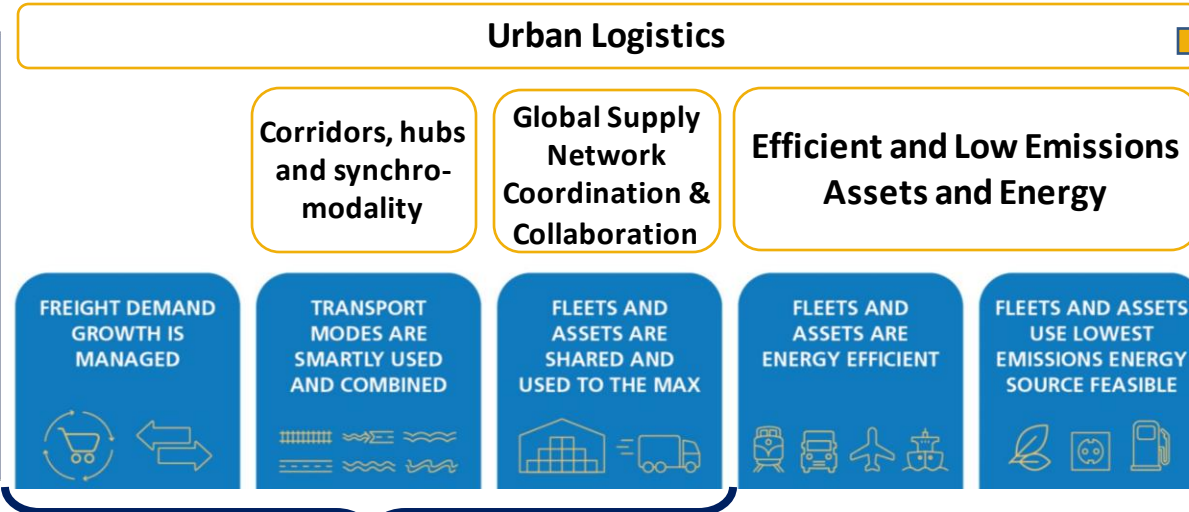
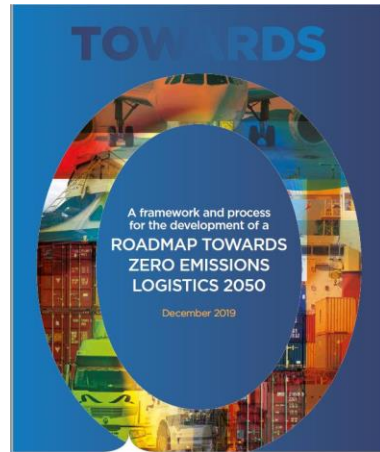


Alliance for Logistics Innovation through Collaboration in Europe

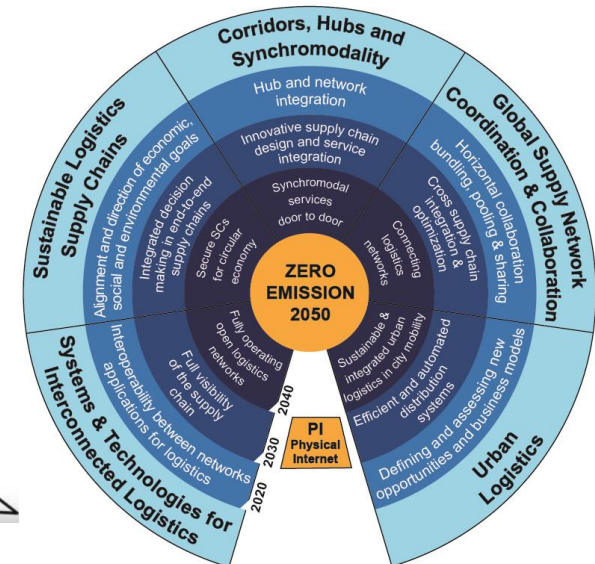
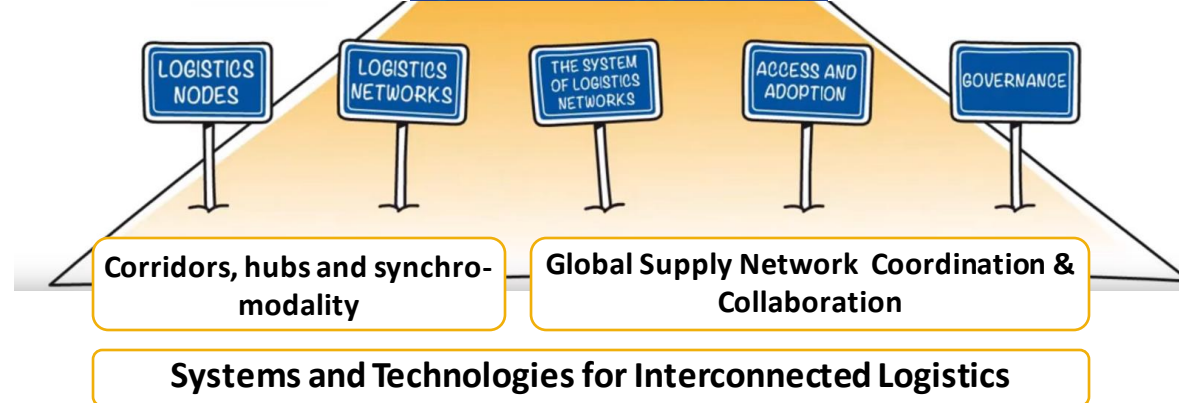
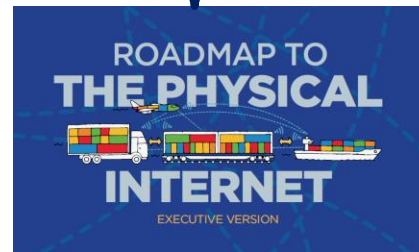
ALICE VISION
Freight transport and logistics is climate neutral and zero emission. Physical Internet paves the way to achieve this transition in an affordable way

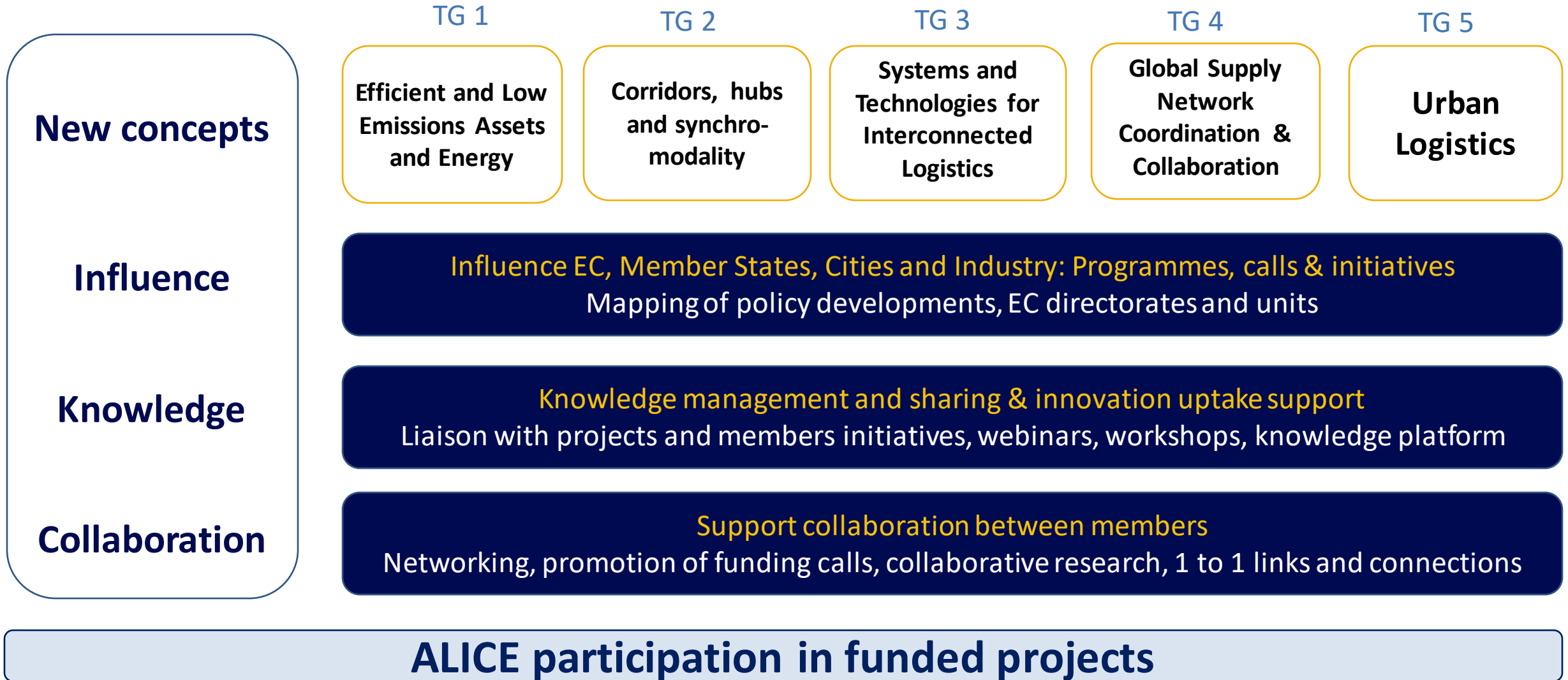
ALICE MISSION
Support our members and stakeholders to achieve logistics decarbonization in an affordable way

Having a clear medium-long term roadmap supports ALICE and its members to focus on short term actions and impacts

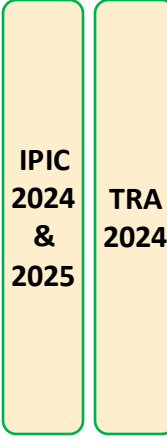
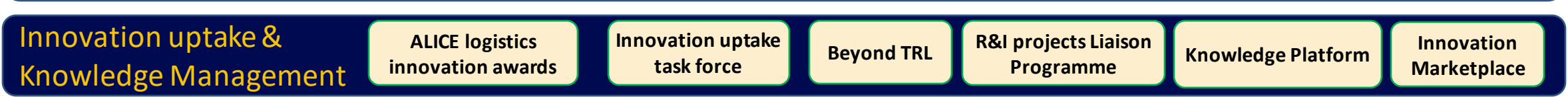
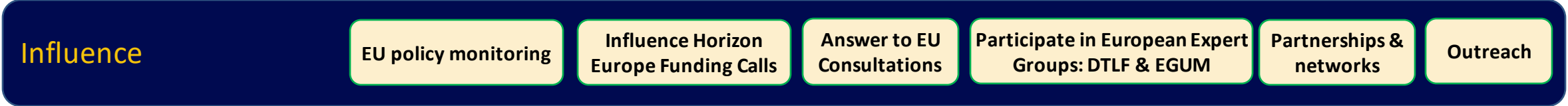
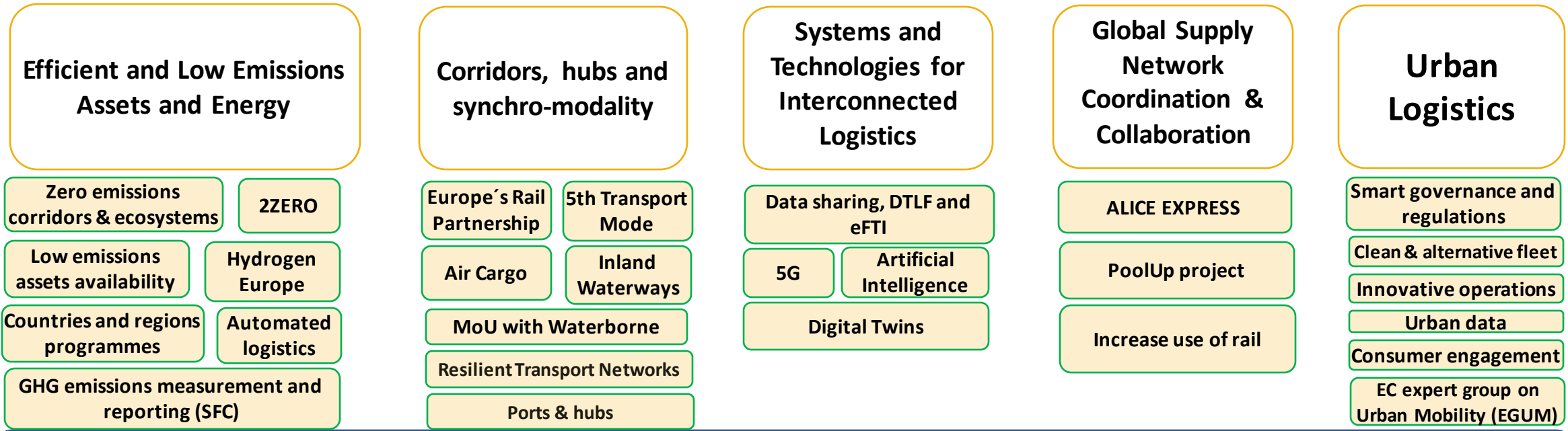


Making assets transition affordable!





Programmes, activity fields and projects 2024



ALICE Chair and Vice-Chairs



Sergio Barbarino
ALICE Vice Chair

Research Fellow



Francois Regis Le Tourneau
ALICE Chair

Vice President Corporate Responsibility - L'Oréal For the Future.



Nik Delmeire
ALICE Vice Chair

Coordinator



Efficient and Low Emissions Assets and Energy

Corridors, hubs and synchro-modality

Systems and Technologies for Interconnected Logistics

Global Supply Network Coordination & Collaboration

Urban Logistics

Thematic Chairs



Andrea Condotta



Public affairs, Sustainability & Innovation Director



Salvador Furió



Director of Innovation & Port Cluster Development



Angelos Amditis



Research Director



Lars Deiterding



Executive Director



Michael Archer



Strategy Development Director, Europe



Hans Schurmans



Logistics operations Director



Paola Cossu



C.E.O. & Shareholder

Press release: [Link](#)

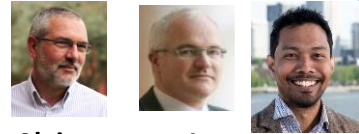
LinkedIn post: [Link](#)

TG 1

Efficient and Low Emissions Assets and Energy



Andrea Condotta



Alain Baeyens Lóri Tavasszy Tharsis Teoh



John Smith



Zeljko Jeftic



TG 2

Corridors, hubs and synchro-modality



Salvador Furió



Kris Neyens Zisis Palaskas Thomas Van Asch



TG 3

Systems and Technologies for Interconnected Logistics



Lars Deiterding



Angelos Admitis



Jon Kuiper



David Ciprés



Anike Murrenhoff



Giannis Kanellopoulos



TG 4

Global Supply Network Coordination & Collaboration



Michael Archer



Bas van Bree



Jan Tore P.



Jannicke Baalsrud



Serge Schamschula



TG 5

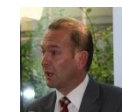
Urban Logistics



Paola Cossu



Hans Schurmans



Chris Vanhoegaerden



Pierre Fils



Johan Leveque



Magnus Blinge





Fernando Liesa
Secretary General



Dirk 't Hooft
Director Finance
& Legal



Indrek Ilves
Director IT &
systems



Yanying Li
Head of Programmes and
Knowledge Management



Elvina Nowak
Project Manager



Pablo Segura
Project and
Knowledge Manager



Yuliya Sahitava
Senior Communication
& Project Manager



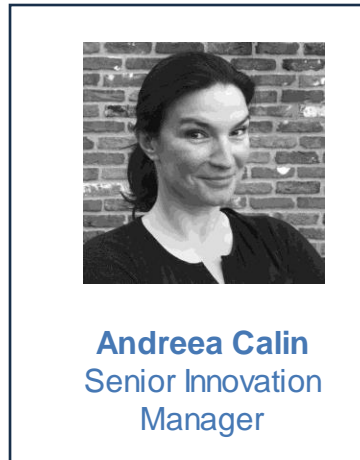
Stefanie Van Damme
Project Manager &
Technical Expert



Máximo Martínez
Project & members
support



Marion Cottet
Project Manager



Andreea Calin
Senior Innovation
Manager



Mar Vicente
ALICE Secretariat Support &
ZLC Research Office Assistant



Edgar Perez
Finance, admin and
communications support



ALICE value for members

Shared vision to build an innovation eco-system s to accelerate affordable transition towards zero emissions logistics & supply chains

European **competences** and capabilities in innovation and sustainable Logistics

Strong **knowledge management**: Member's initiatives & 60+ R&I projects

Finding the **right people to collaborate**: Sustainability, Innovation and Public Affairs functions enable different discussions than procurement (supplier-customer)

ALICE is the **link to the EC** freight transport and logistics innovation and funding program and can influence EU policies

ALICE is the platform to **brainstorm, network, share new ideas** and support companies in their implementation

Membership fee

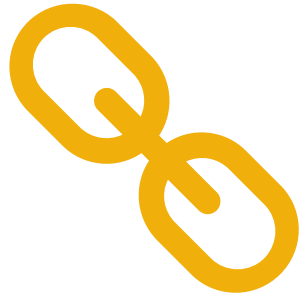


Industry members and companies (public or private):

- Companies with less than 250 employees and less than € 50 million turnover. € 1.500
- Companies with less than 1,000 employees and less than € 250 million turnover € 3.000
- Companies with more than 1,000 employees and more than € 250 million turnover € 4.500

(1) For new companies and start-ups, 60, 40 and 20% reductions of the fee are applied in the first 3 years of membership. It is applicable for companies with less than 3 years old. Send justification together with the form.

How to become member of ALICE ?



Link to website

<https://www.etp-logistics.eu/how-to-join/>



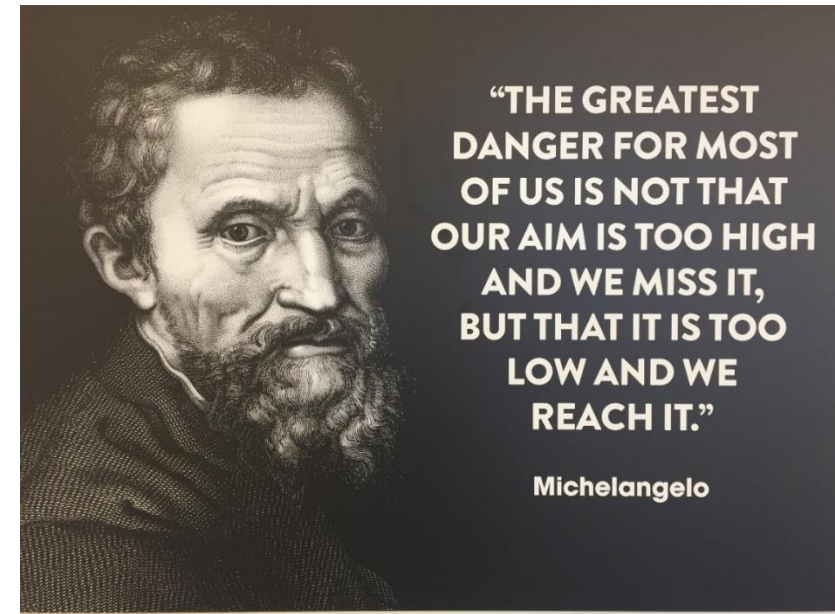
Application form download:

[Link](#)

alice

Alliance for
Logistics Innovation
through Collaboration
in Europe

Thank you!



“THE GREATEST
DANGER FOR MOST
OF US IS NOT THAT
OUR AIM IS TOO HIGH
AND WE MISS IT,
BUT THAT IT IS TOO
LOW AND WE
REACH IT.”

Michelangelo

The Best Way To Predict The Future Is To Create It!

Source: President Abraham Lincoln



If you want to go fast, go alone If you want to go far, go together

www.etp-alice.eu

info@etp-alice.eu

