

Industry lead logistics innovation for a more competitive and sustainable industry

The European Technology Platform ALICE

alice

Alliance for
Logistics Innovation
through Collaboration
in Europe



Content

1. Who is ALICE?
2. The vision for ALICE organization
3. ALICE ambition: Support transition to zero emissions logistics in an affordable way
4. Overall structure & activities
5. ALICE value for members
6. How to join



ALICE, Alliance for Logistics Innovation through Collaboration in Europe

not-for-profit association, registered in Brussels, since 2014

Recognized by the European Commission as a *European Technology Platform*¹

Who is ALICE

1. European Technology Platforms, ETPs are industry-led stakeholder fora that develop short to long-term research and innovation agendas and roadmaps for action at EU and national level to be supported by both private and public funding. More Info on ETPs http://www.etp-logistics.eu/wp-content/uploads/2021/03/Logistic-TP-recognition-SWD_2013_272_F1_STAFF_WORKING_PAPER_EN_V2_P1_735480.pdf

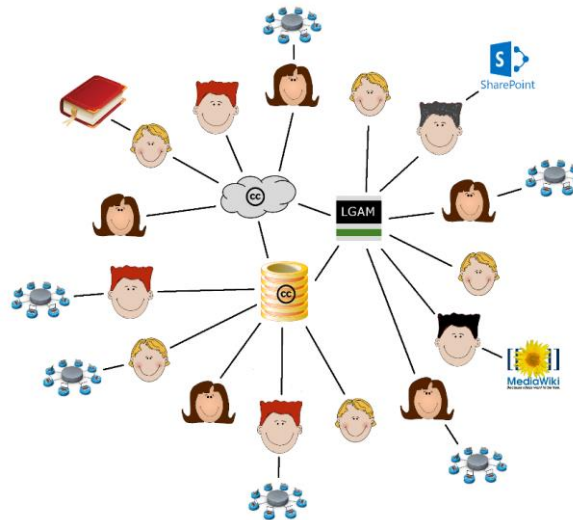
ALICE membership is bringing an holistic approach → All key logistics stakeholders represented!

Type of Organization	Members	EU/International Associations
Shippers & Retail		
Logistics Service Providers, Courier and Postal operators & Freight Forwarders		
Ports, Hubs, Real Estate companies, Intermodal terminals & Transport/Energy Infrastructure		
Transport and industry vehicles, packaging & material handling		
Information and Communication Technologies & Consultancy		
Regional & National Logistics Clusters & Associations		
Research and technology Centers		
European Technology Platforms / PPPs		
Member States and innovation Funding*		

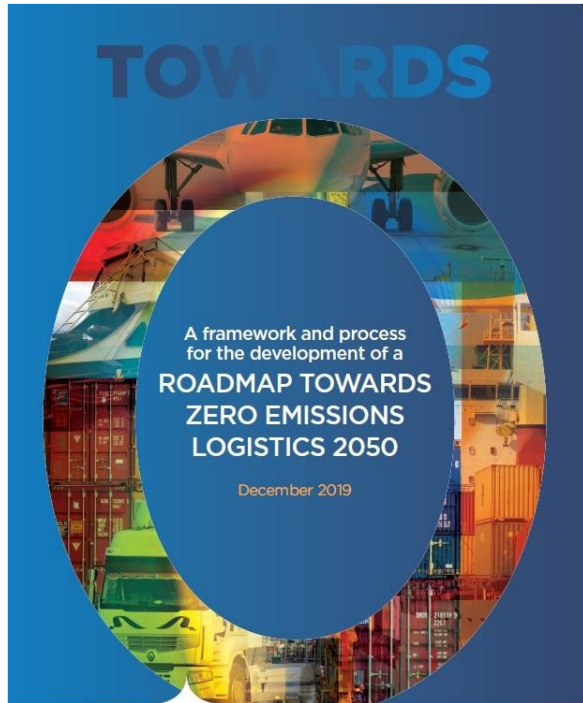
*Involved in ALICE Mirror Group

Mission: acceleration of decarbonization in affordable way

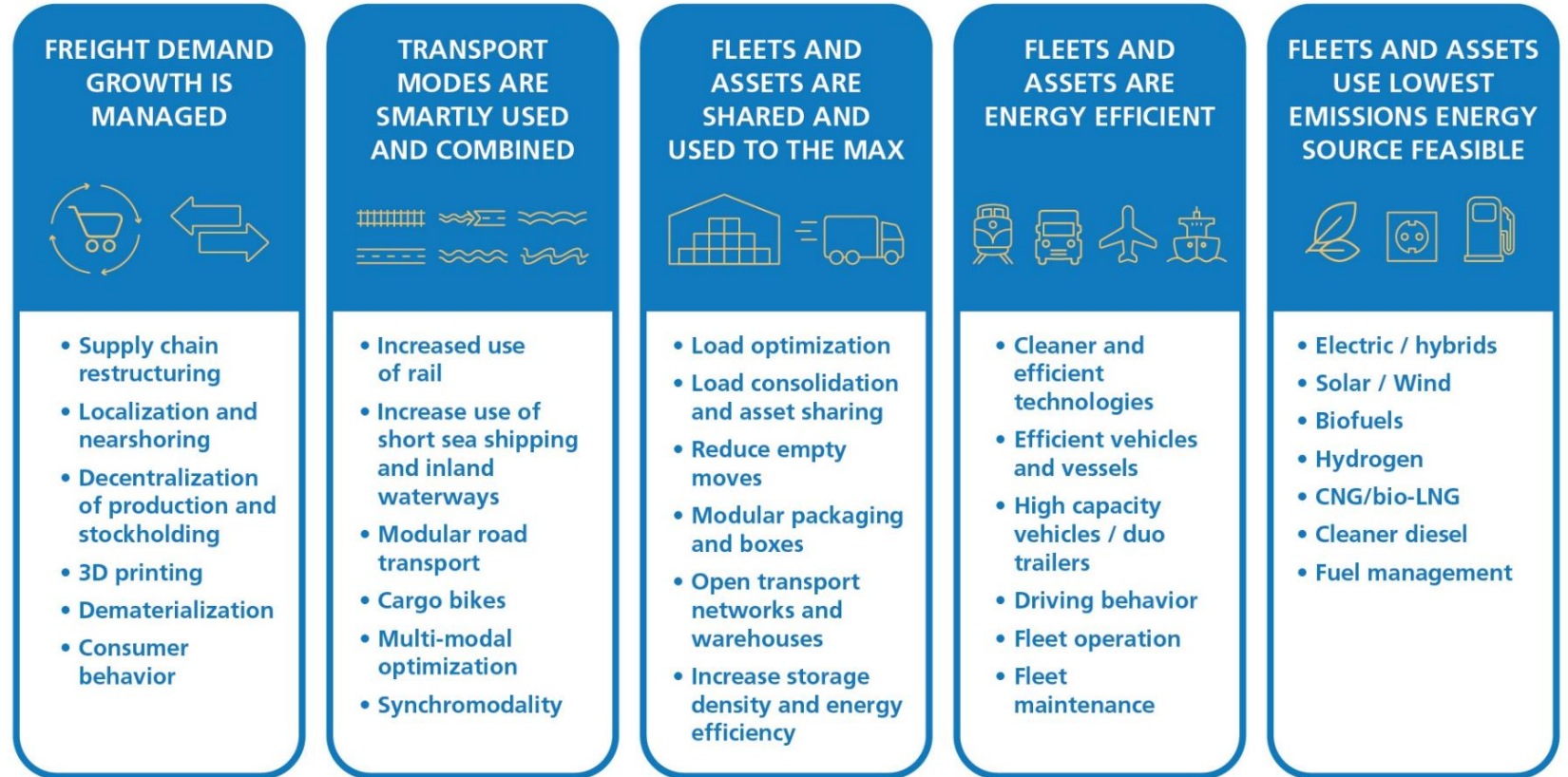
INNOVATION

A close-up photograph of a right hand holding a thick, horizontal blue line. The hand is positioned on the right side of the frame, with the thumb and index finger gripping the line. The line extends from the hand towards the left edge of the image. The background is a plain, light gray. The word "INNOVATION" is partially visible at the top of the image, with the letters "INNO" clearly shown in a blue, sans-serif font.

New concepts – influence - knowledge management – collaboration



[Link to the document](#)

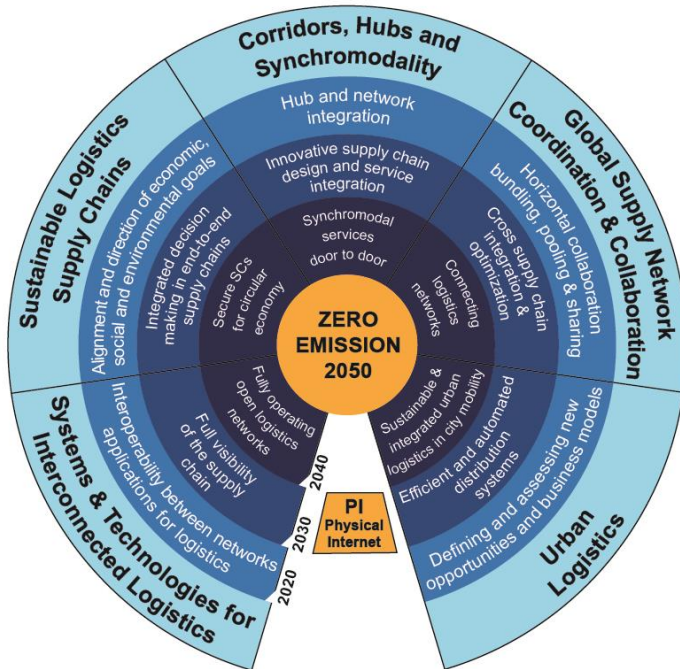


© Smart Freight Centre and ALICE-ETP based on A. McKinnon 'Decarbonizing Logistics' (2018) Roadmap Towards Zero Emissions Logistics 2050. ALICE (2019) www.etp-alice.eu

**Additional
focus needed**

Current focus

Making assets transition affordable!

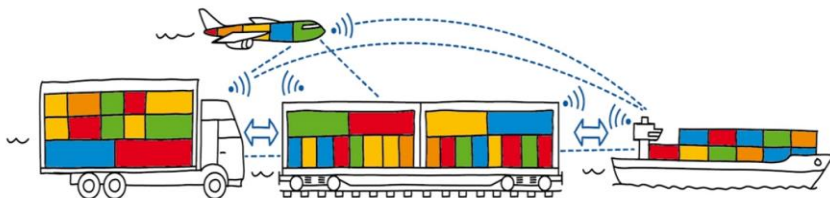


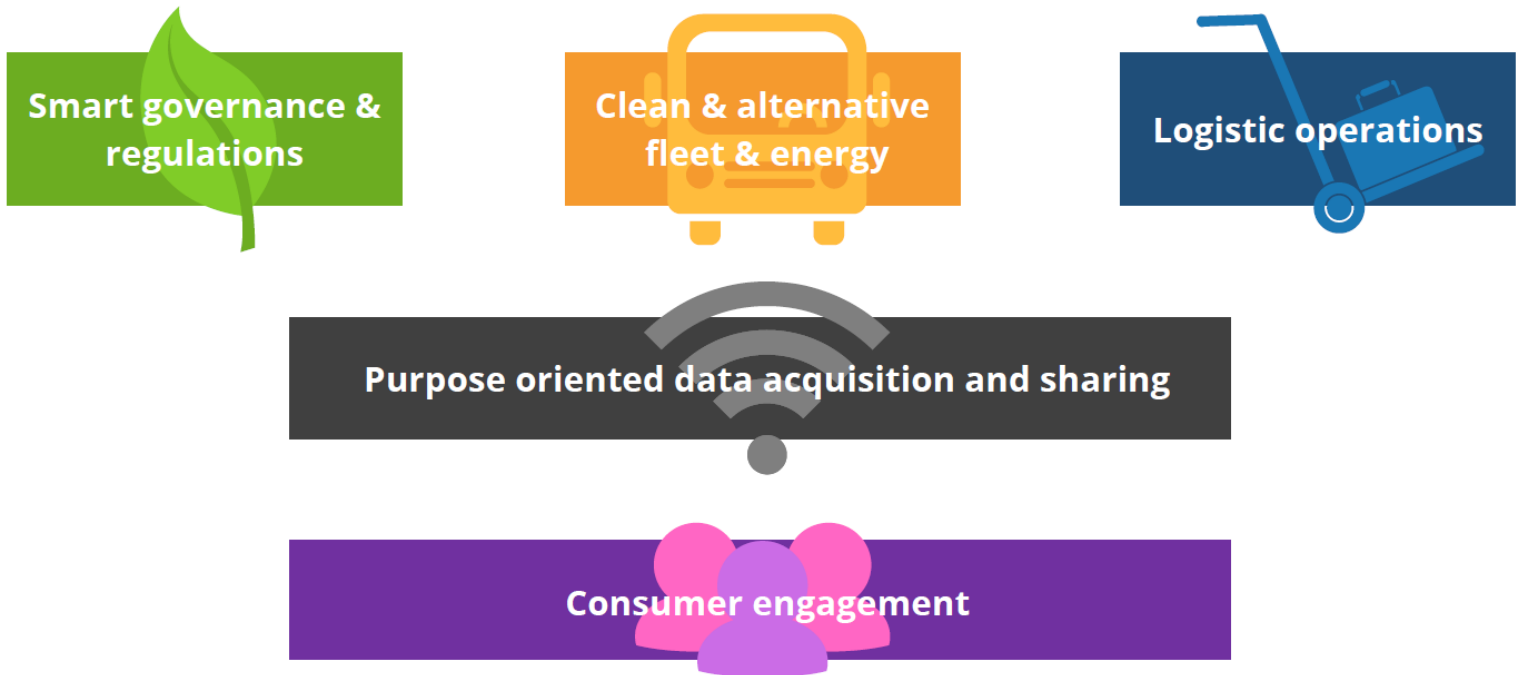
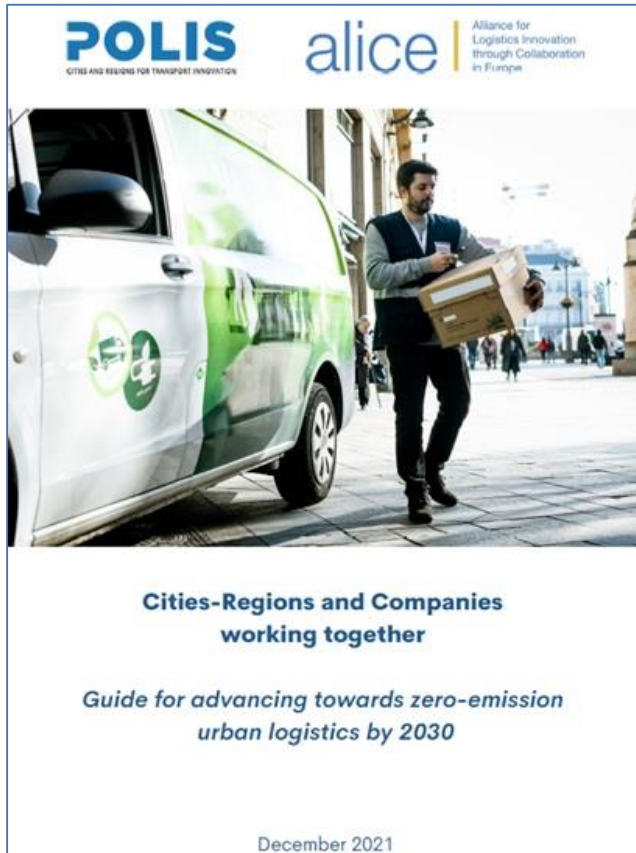
ALICE VISION: freight transport and logistics is climate neutral and zero emission. Physical Internet paves the way to achieve this transition in an affordable way

- **Physical Internet (PI)** enables seamless access to resources and assets in open, connected and shared networks
- Enabling companies to seamlessly **consolidate flows and increase assets utilization.**
- PI includes transport, storage and physical handling operations of load units.
- It brings **efficiency, resilience and agility** = savings invested in vehicles and energy transition.
- PI concepts can **deliver results in the critical next 10 years**

THE PHYSICAL INTERNET

Interconnected logistics networks, sharing assets and capabilities





ALICE vision, mission, roadmaps and Thematic Groups

ALICE Thematic groups (TGs)
and link to roadmaps

alice

Alliance for
Logistics Innovation
through Collaboration
in Europe

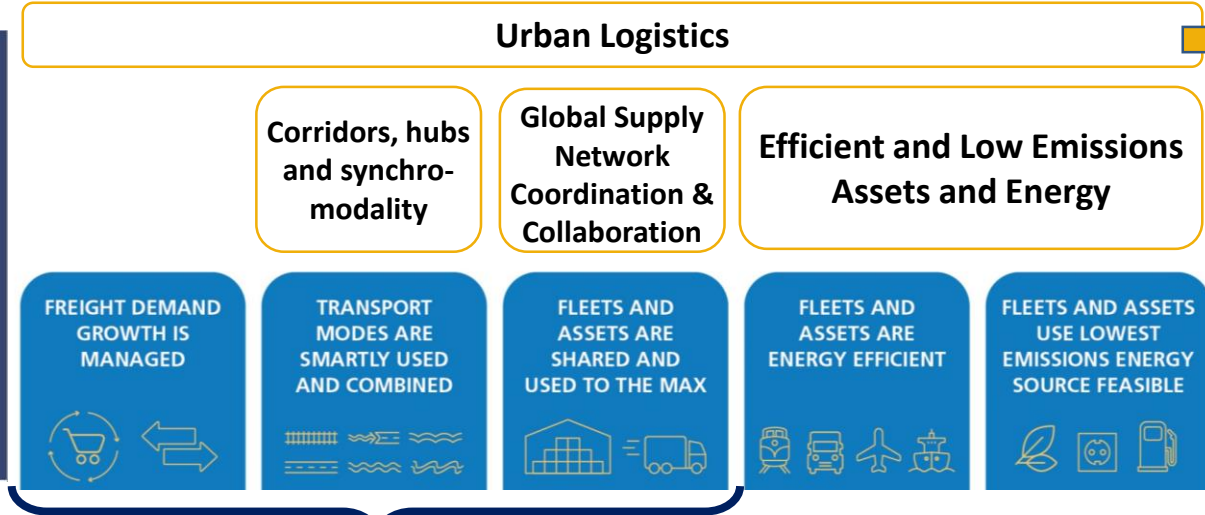
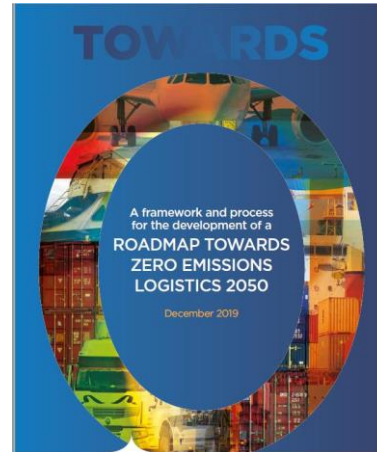
ALICE VISION

Freight transport and logistics is
climate neutral and zero emission.
Physical Internet paves the way to
achieve this transition in an
affordable way

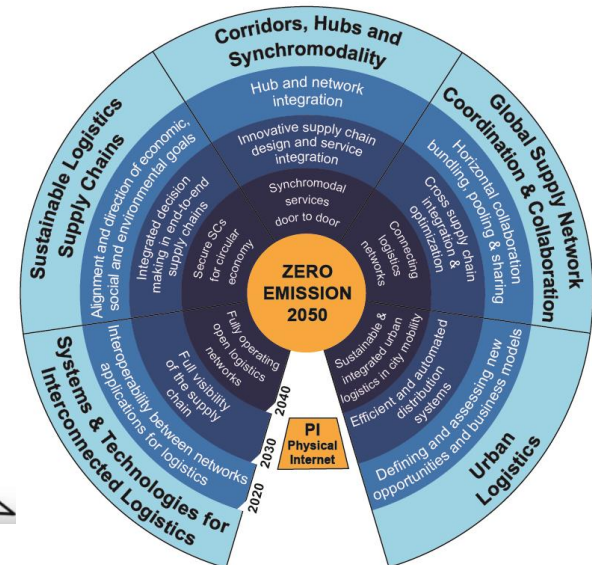
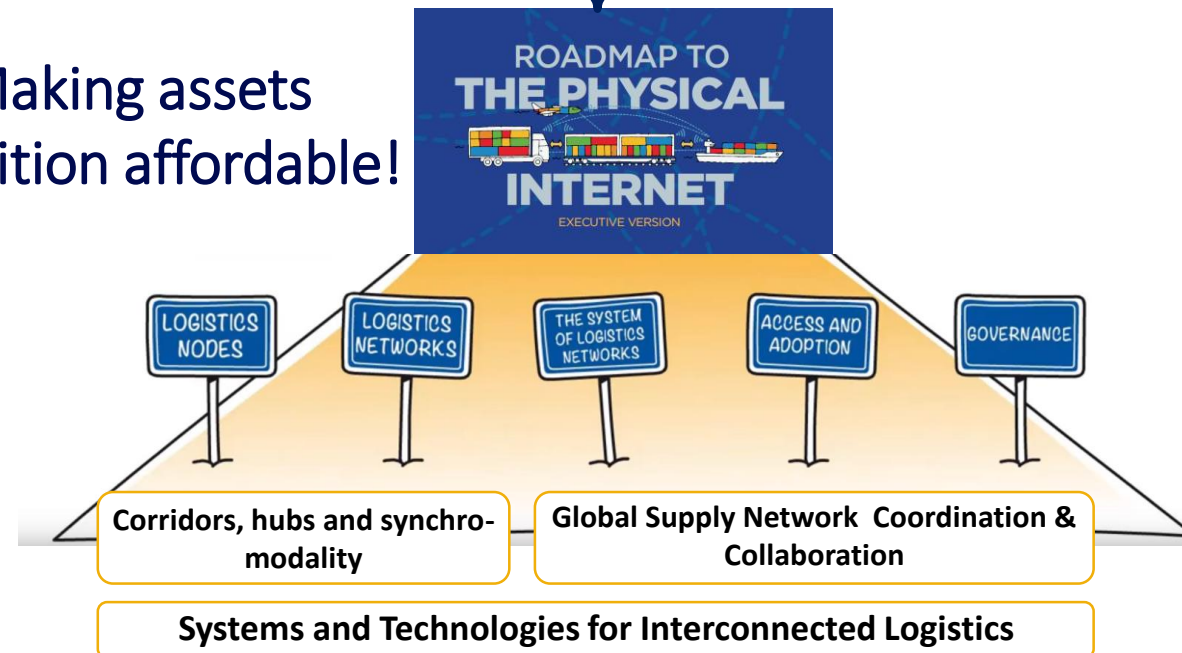
ALICE MISSION

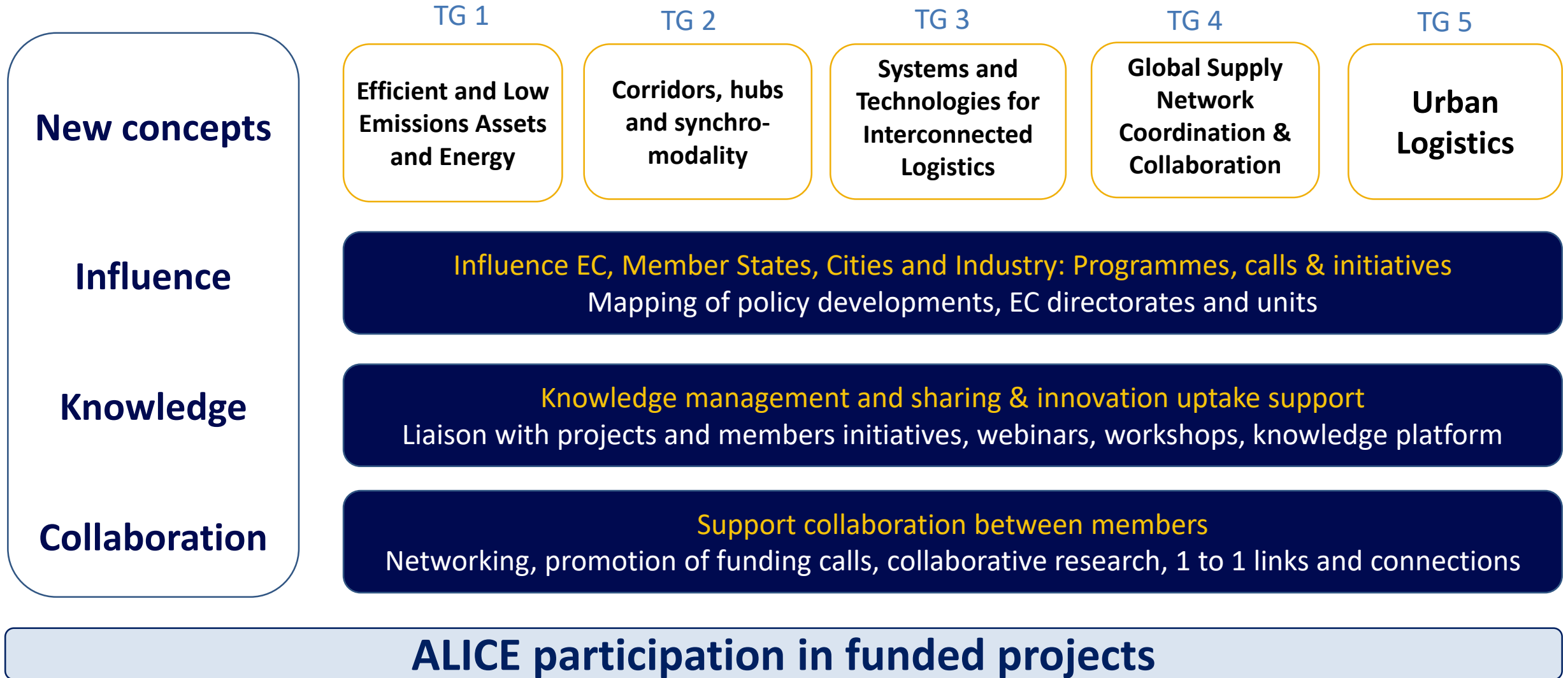
Support our members and
stakeholders to achieve logistics
decarbonization in an affordable
way

Having a clear medium-long term
roadmap supports ALICE and its
members to focus on short term
actions and impacts



Making assets
transition affordable!





Programmes and activity fields/projects 2023

Started within 2023

To start within 2023

Finished within 2023

alice

Alliance for
Logistics Innovation
through Collaboration
in Europe

Efficient and Low Emissions Assets and Energy

2ZERO: Zero
Emissions Road

Hydrogen Europe

GHG emissions measurement and
reporting (SFC)

Low emissions
assets availability

CCAM

Countries and regions decarbonization
programmes/ funding

Corridors, hubs and synchro-modality

Europe's Rail
Partnership

5th Transport
Mode

Air Cargo

Inland
Waterways

MoU with Waterborne

Ports and Hubs

Resilient Transport Networks

Systems and Technologies for Interconnected Logistics

Data sharing, DTLF and
eFTI

5G

Artificial
Intelligence

Digital Twins

Global Supply Network Coordination & Collaboration

PoolUp project

Increase
use of rail

LTL
consolidation

Readiness for
Scale/beyond TRL

Decision trees for
companies

Urban Logistics

Smart governance and
regulations

Clean & alternative fleet

Innovative operations

Urban data

Consumer engagement

EC expert group on
Urban Mobility (EGUM)

Influence Policy mapping

Mapping relevant EU
policies

Influence Horizon
Europe Funding Calls

Contribute to
Consultations

Participate in European Expert
Groups, DTLF & EGUM

Events
participation

Knowledge management/sharing and innovation uptake support

Innovation
Marketplace

R&I projects Liaison
Programme

Knowledge Platform

Webinars and workshops

Support collaboration between members:

Enable 1 to 1
connections

CEF Calls

Horizon Europe

Funded
Projects

BOOSTLOG

PIONEERS

FENIX

Seamless

URBANE

DISCO

REMUNET

DELPHI

ENTRANCE

Cristal

MODI

MultiReload

ZEFES

STRENGTH-M

SARIL

Proposals
preparation
(17)

IPIC
2023

TRA
2024

ALICE Chair and Vice-Chairs



Sergio Barbarino
ALICE Vice Chair
Research Fellow



Francois Regis Le Tourneau
ALICE Chair
Vice President Corporate Responsibility -
L'Oréal For the Future.



Nik Delmeire
ALICE Vice Chair
Coordinator



Efficient and
Low Emissions
Assets and
Energy

Corridors,
hubs and
synchro-
modality

Systems and
Technologies for
Interconnected
Logistics

Global Supply
Network
Coordination
&
Collaboration

Urban
Logistics

Thematic Chairs



**Andrea
Condotta**



Public affairs, Sustainability
& Innovation Director



Salvador Furió



Director of Innovation
& Port Cluster
Development



**Angelos
Amditis**



Research Director



**Lars
Deiterding**



Executive Director



**Michael
Archer**



Strategy Development
Director, Europe



**Hans
Schurmans**



Logistics operations
Director



**Paola
Cossu**



C.E.O. &
Shareholder

Press release: [Link](#)

LinkedIn post: [Link](#)

TG 1

Efficient and Low Emissions Assets and Energy



Andrea Condotta



Alain Baeyens Lóri Tavasszy Tharsis Teoh



John Smith



Zeljko Jetic



TG 2

Corridors, hubs and synchro-modality



Salvador Furió



Kris Neyens



Zisis Palaskas



Thomas Van Asch



TG 3

Systems and Technologies for Interconnected Logistics



Lars Deiterding



Angelos Admitis



Jon Kuiper



Giannis Kanellopoulos



David Ciprés



Anike Murrenhoff



TG 4

Global Supply Network Coordination & Collaboration



Michael Archer



Bas van Bree



Serge Schamschula



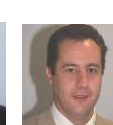
Jan Tore P.



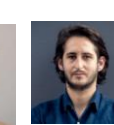
Jannicke Baalsrud



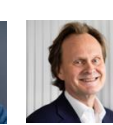
Chris Vanhoegaerden



Pierre Fils



Johan Leveque



Magnus Blinge



TG 5

Urban Logistics



Paola Cossu



Hans Schurmans





Fernando Liesa
Secretary General



Dirk 't Hooft
Director Finance
& Legal



Indrek Ilves
Director IT &
systems



Yanying Li
Head of Programmes and
Knowledge Management



Tomas Ambra
Programmes Manager &
Technical Expert



Elvina Nowak
Project Manager



Pablo Segura
Project and
Knowledge Manager



Stefanie Van Damme
Project Manager &
Technical Expert



Máximo Martínez
Project & members
support



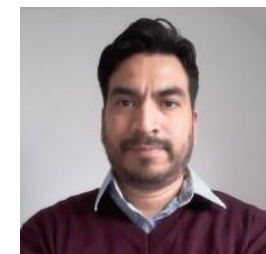
Marion Cottet
Project Manager



Andrea Annunziata
Policy Monitoring &
Support



Mar Vicente
ALICE Secretariat Support &
ZLC Research Office Assistant



Edgar Perez
Finance, admin and
communications support

ALICE value for members

Shared vision to build an innovation eco-systems to accelerate affordable transition towards zero emissions logistics & supply chains

European **competences** and capabilities in innovation and sustainable Logistics

Strong **knowledge management**: Member's initiatives & 60+ R&I projects

Finding the **right people to collaborate**: Sustainability, Innovation and Public Affairs functions enable different discussions than procurement (supplier-customer)

ALICE is the **link to the EC** freight transport and logistics innovation and funding program and can influence EU policies

ALICE is the platform to **brainstorm, network, share new ideas** and support companies in their implementation

Membership fee



Industry members and companies (public or private):

- Companies with less than 250 employees and less than € 50 million turnover. € 1.500
- Companies with less than 1,000 employees and less than € 250 million turnover € 3.000
- Companies with more than 1,000 employees and more than € 250 million turnover € 4.500

(1) For new companies and start-ups, 60, 40 and 20% reductions of the fee are applied in the first 3 years of membership. It is applicable for companies with less than 3 years old. Send justification together with the form.

Membership fee



Research Members *

- | | |
|--|---------|
| • Universities | € 1.500 |
| • Research institutes with less than 250 employees | € 1.500 |
| • Research institutes with more than 250 employees | € 3.500 |

* Since ALICE is industry-driven, research members are required to get an [endorsement letter by an ALICE industry member](#).

Membership fee



European related Industry Association**

€ 1.000

** Associations that do not receive European funding from EU research programmes are exempted of paying membership fee

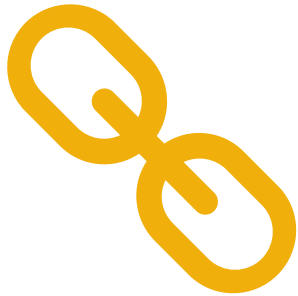
Membership fee



- National and regional Technology Platforms
- National Logistics Associations
- Logistics Clusters
- Non-governmental organisations
- Other stakeholders

€ 1.500

How to become member of ALICE ?



Link to website

<https://www.etp-logistics.eu/how-to-join/>



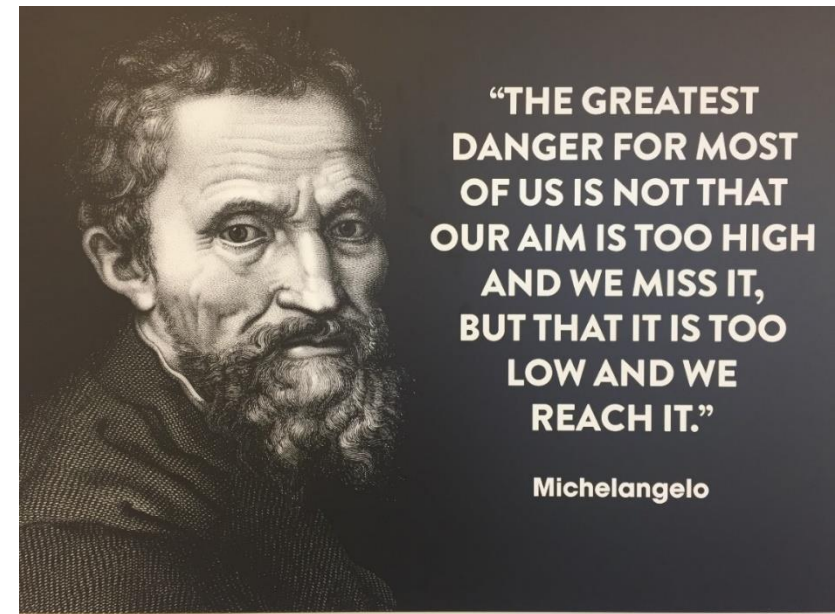
Application form download:

[Link](#)

alice

Alliance for
Logistics Innovation
through Collaboration
in Europe

Thank you!



The Best Way To Predict The Future Is To Create It!

Source: President Abraham Lincoln

If you want to go fast, go alone If you want to go far, go together



www.etp-alice.eu

info@etp-alice.eu



[This Photo](#) by Unknown Author is licensed under [CC BY-SA](#)