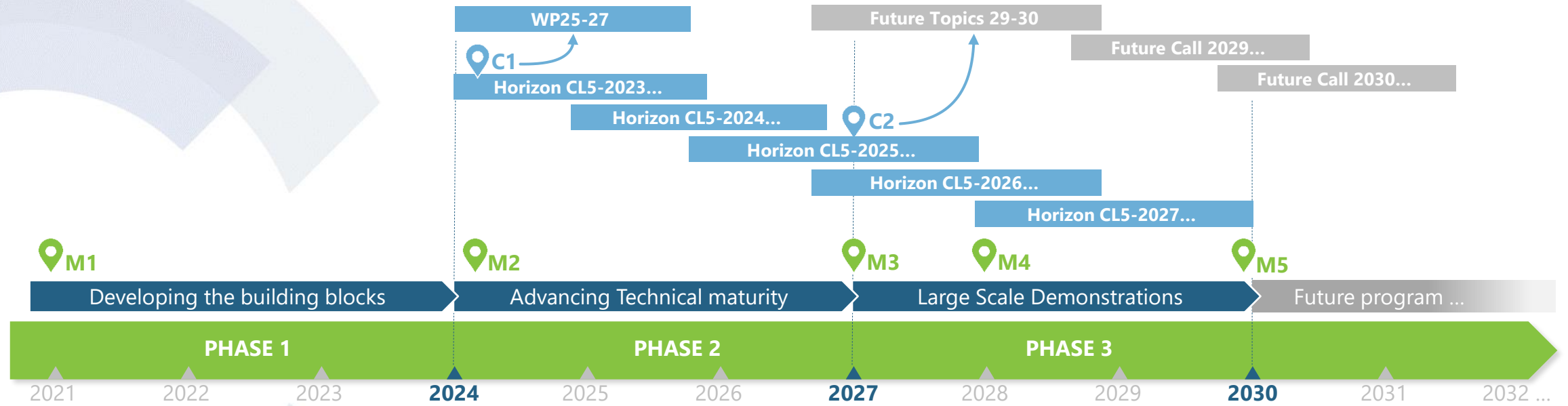


CCAM PARTNERSHIP IN HORIZON EUROPE

Armin Gräter, 28.11.23

Updating CCAM SRIA: Phases

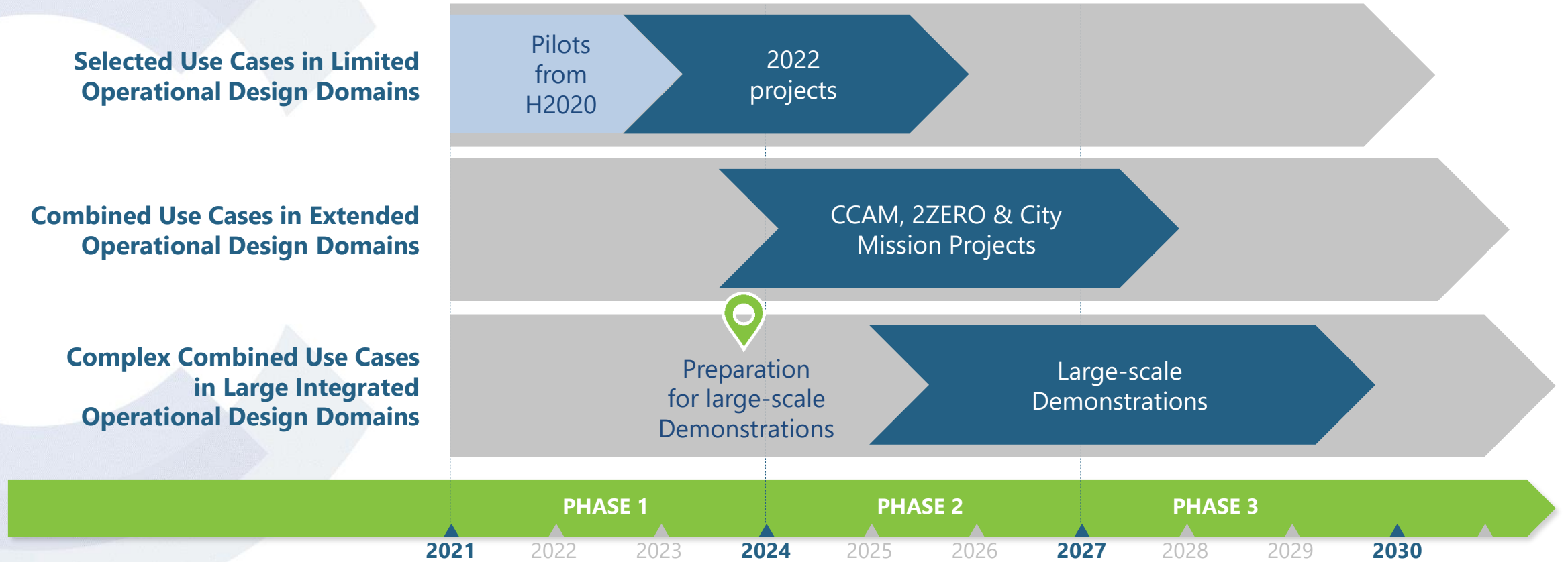


- M1** Long Term coordination framework for R&I and large-scale testing activities.
- M2** Common evaluation framework fostering exchange and reuse of R&I results
- M3** Accepted safety standards for automated mobility on public roads
- M4** Enable trustworthy interaction between all traffic participants and CCAM
- M5** Large-scale demonstration of user-oriented and well-integrated CCAM solutions for mobility of people and goods in at least 30 demonstration sites across Europe

- C1** Checkpoint for delta reinforcement in order to achieve target
- C2** Checkpoint for delta reinforcement in order to achieve target (envisioning next generation)

Updating CCAM SRIA: Focus

Cluster 1: Large-scale Demonstrations



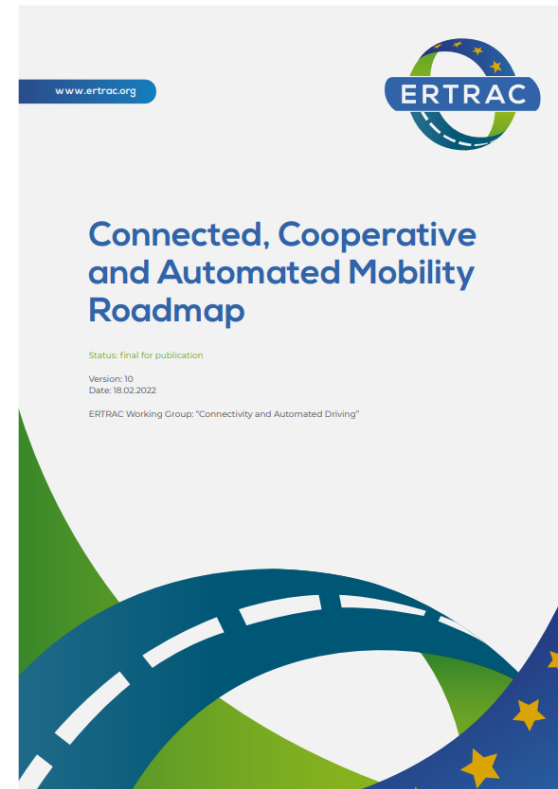
CCAM Partnership & ERTRAC CAD WG

A complementary approach.



The SRIA is the reference document of the partnership aiming at identifying research and innovation priorities, detailing the expected impacts as well as the Key Performance Indicators.

→ **Update focus on Large Scale Demonstration**



The ERTRAC Roadmap is the position of the independent technology platform aiming at drawing the overall longterm picture as well as the concrete next steps referring to Ambitious and realistic use cases.

→ **Agenda 2030 focus on Innovation Use Cases**

Preparation of LARGE SCALE DEMOS: Research / Development / Innovation

1.1 Connected services

Innovation: safety and traffic management related services
Fleet management & Carsharing schemes

1.2 Highways

Innovation: L3 Traffic Jam, L3 Commute
Development: **L4 Truck safe auto-follow**
Research: L3/L4 Full Highway

1.3 Parking

Innovation: AVP Infrastructure focus
Development: AVP Vehicle tech focus

1.4 Confined areas, semi-dedicated lanes

Innovation: Bus depot / **Truck terminal**
Research: **L4 Truck hub-to-hub operation**

1.5 Urban transport and mobility services

Innovation: **Last mile goods and services**
Development: Fixed route shuttles / shared vehicles
Bus auto-follow
Research: **Flexible route** people and **goods**

1.6 Rural roads

Research: Fixed route shuttles / shared vehicles, municipal services