

*Industry lead logistics innovation for a more competitive and sustainable industry*

---

The European Technology Platform ALICE

alice

Alliance for  
Logistics Innovation  
through Collaboration  
in Europe



# Content

---

1. Who is ALICE?
2. The vision for ALICE organization
3. ALICE ambition: Support transition to Zero Emissions Logistics in an affordable way
4. Overall structure & activities
5. ALICE value for members
6. How to join



ALICE, Alliance for Logistics Innovation through Collaboration in Europe

**not-for-profit association**, registered in Brussels, since 2015

Recognized by the European Commission as a *European Technology Platform*<sup>1</sup>

Who is ALICE

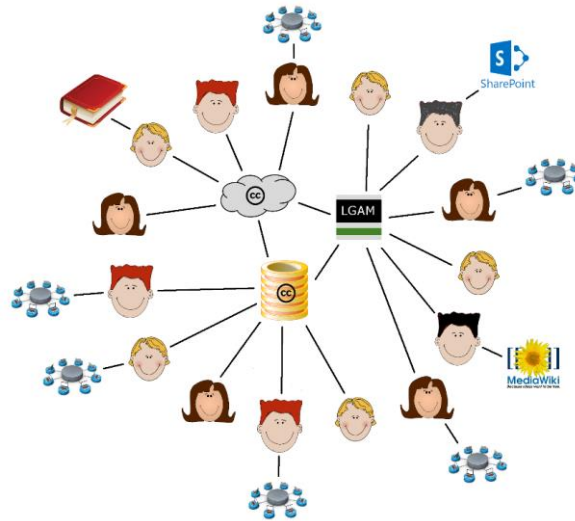
1. European Technology Platforms, ETPs are industry-led stakeholder fora that develop short to long-term research and innovation agendas and roadmaps for action at EU and national level to be supported by both private and public funding. More Info on ETPs [http://www.etp-logistics.eu/wp-content/uploads/2021/03/Logistic-TP-recognition-SWD\\_2013\\_272\\_F1\\_STAFF\\_WORKING\\_PAPER\\_EN\\_V2\\_P1\\_735480.pdf](http://www.etp-logistics.eu/wp-content/uploads/2021/03/Logistic-TP-recognition-SWD_2013_272_F1_STAFF_WORKING_PAPER_EN_V2_P1_735480.pdf)



# ALICE membership is bringing an holistic approach → All key logistics stakeholders represented!

Type of Organization	Members	EU/International Associations
Shippers & Retail		
Logistics Service Providers, Courier and Postal operators & Freight Forwarders		
Ports, Hubs, Real Estate companies, Intermodal terminals & Transport Infrastructure		
Transport and industry vehicles, packaging & material handling		
Information and Communication Technologies & Consultancy		
Regional & National Logistics Clusters & Associations		
Research and technology Centers		
European Technology Platforms /PPPs		
Member States and innovation Funding*		

\*Involved in ALICE Mirror Group



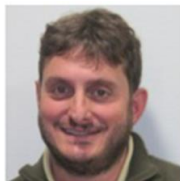
A close-up photograph of a right hand holding a blue pen. The hand is positioned on the right side of the frame, with the index finger and thumb gripping the pen. A long, straight, horizontal blue line has been drawn across the white background, extending from the pen tip on the right towards the left edge of the image. The line is slightly thicker in the middle and tapers towards the ends. The hand has light skin and short, manicured nails. The background is a plain, bright white surface.

## New concepts – influence - knowledge management – collaboration

## Mission: acceleration of decarbonization in affordable way



## ALICE Chair and Vice-Chairs



**Sergio Barbarino**  
ALICE Vice Chair  
**P&G**  
Procter & Gamble  
Research Fellow



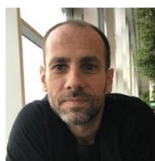
**Francois Regis Le Tourneau**  
ALICE Chair  
**L'ORÉAL**  
Corporate Supply Chains Standards &  
Prospectives Director



**Nik Delmeire**  
ALICE Vice Chair  
Coordinator  
**European IWT Platform**



**Pieter Leonard**  
**COLRUYT GROUP**



**Salvador Furió**  
**valenciaport**  
Autoridad Portuaria de Valencia  
Director of Innovation  
& Port Cluster  
Development



**Tomas Ambra**  
**umec**  
Logistics  
Research Lead



**Angelos Amditis**  
**ETIXEY**  
IGCS  
Research Director



**Lars Deiterding**  
**HaCon**  
Traffic • Software • Service  
Executive Director



**Michael Archer**  
**CHEP**  
Strategy Development  
Director, Europe



**Charlotte Migne**  
**FM LOGISTIC**  
Group Sustainable  
Development Director

## Secretariat



**Fernando Liesa**  
Secretary General



**Dirk 't Hooft**  
Director  
Communication &  
Programmes Director



**Yanying Li**  
Head of  
Programmes



**Indrek Ilves**  
System & Technologies for  
Interconnected Logistics  
Programme Coordinators



**Pablo Segura**  
Project Support  
& Knowledge  
Manager



**Andrea Annunziata**  
Project Support &  
Knowledge  
Manager



**Mar Vicente**  
Secretariat  
Support

## Thematic Group leaders

Efficient and  
Low Emissions  
Assets and  
Energy

Corridors, hubs  
and synchro-  
modality

Systems and  
Technologies for  
Interconnected  
Logistics

Supply Network  
Coordination &  
Collaboration

Urban  
Logistics

# ALICE vision, mission, roadmaps and Thematic Groups

ALICE Thematic groups (TGs)  
and link to roadmaps

alice

Alliance for  
Logistics Innovation  
through Collaboration  
in Europe

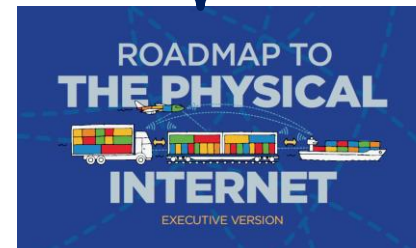
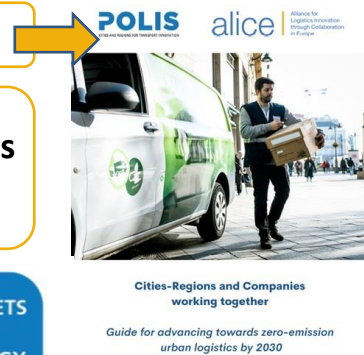
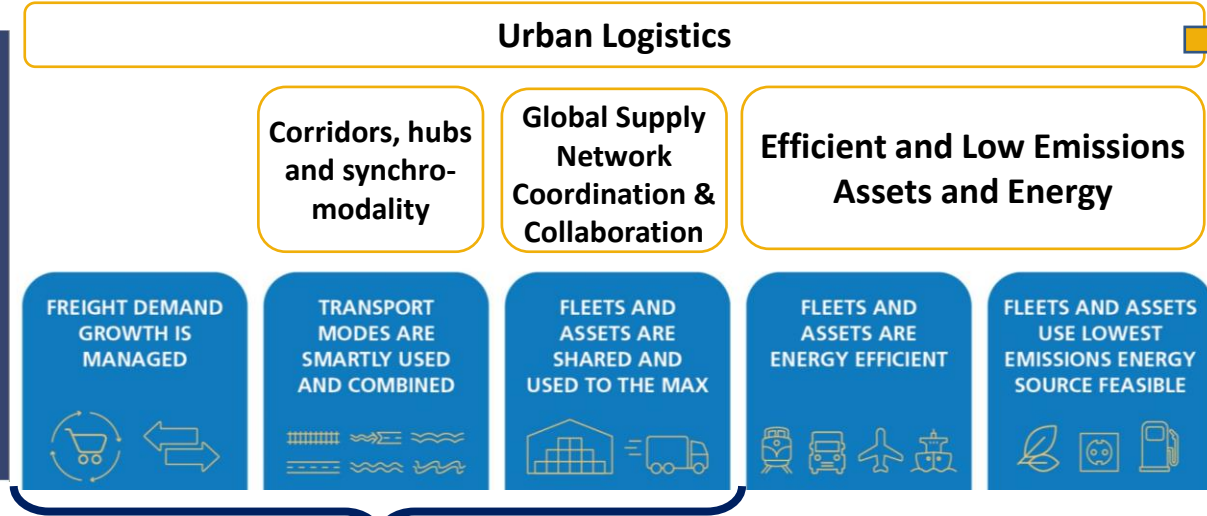
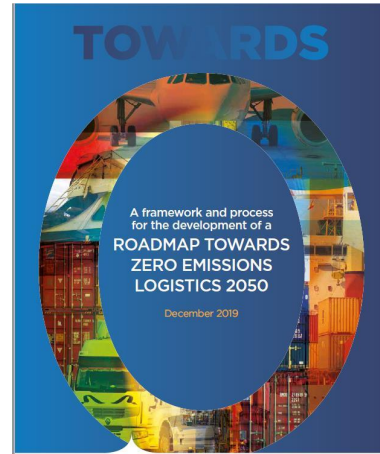
## ALICE VISION

Freight transport and logistics is  
climate neutral and zero emission.  
Physical Internet paves the way to  
achieve this transition in an  
affordable way

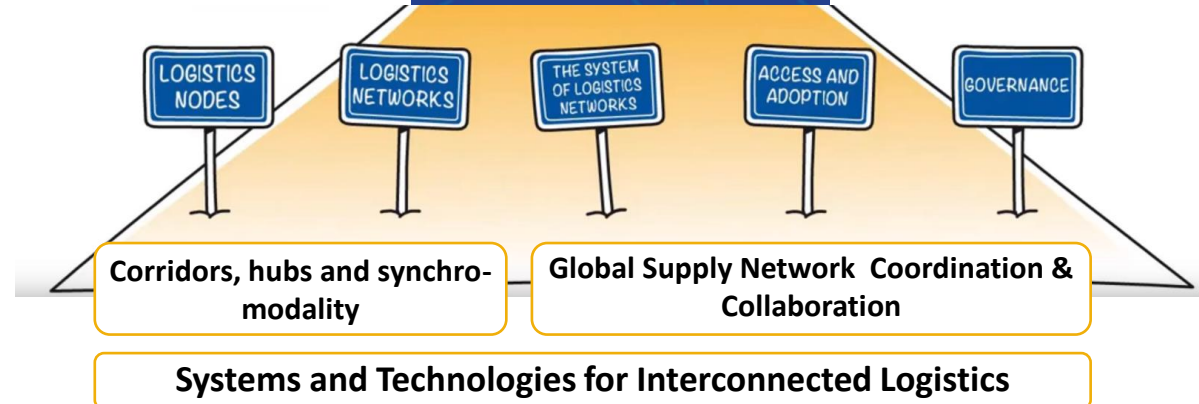
## ALICE MISSION

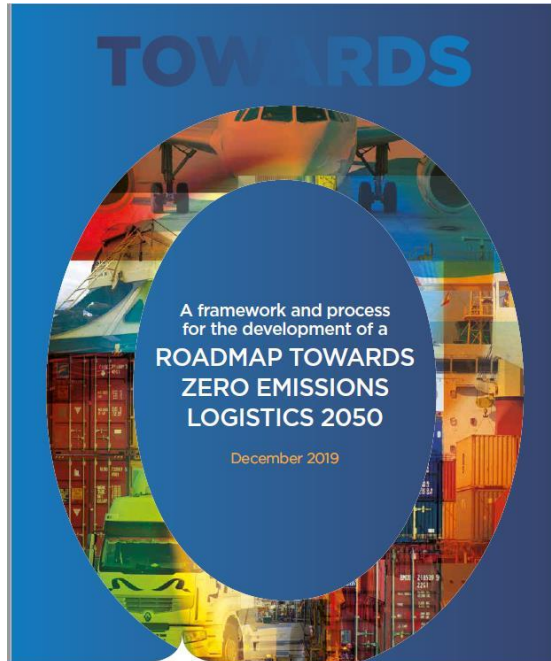
Support our members and  
stakeholders to achieve logistics  
decarbonization in an affordable  
way

Having a clear medium-long term  
roadmap supports ALICE and its  
members to focus on short term  
actions and impacts

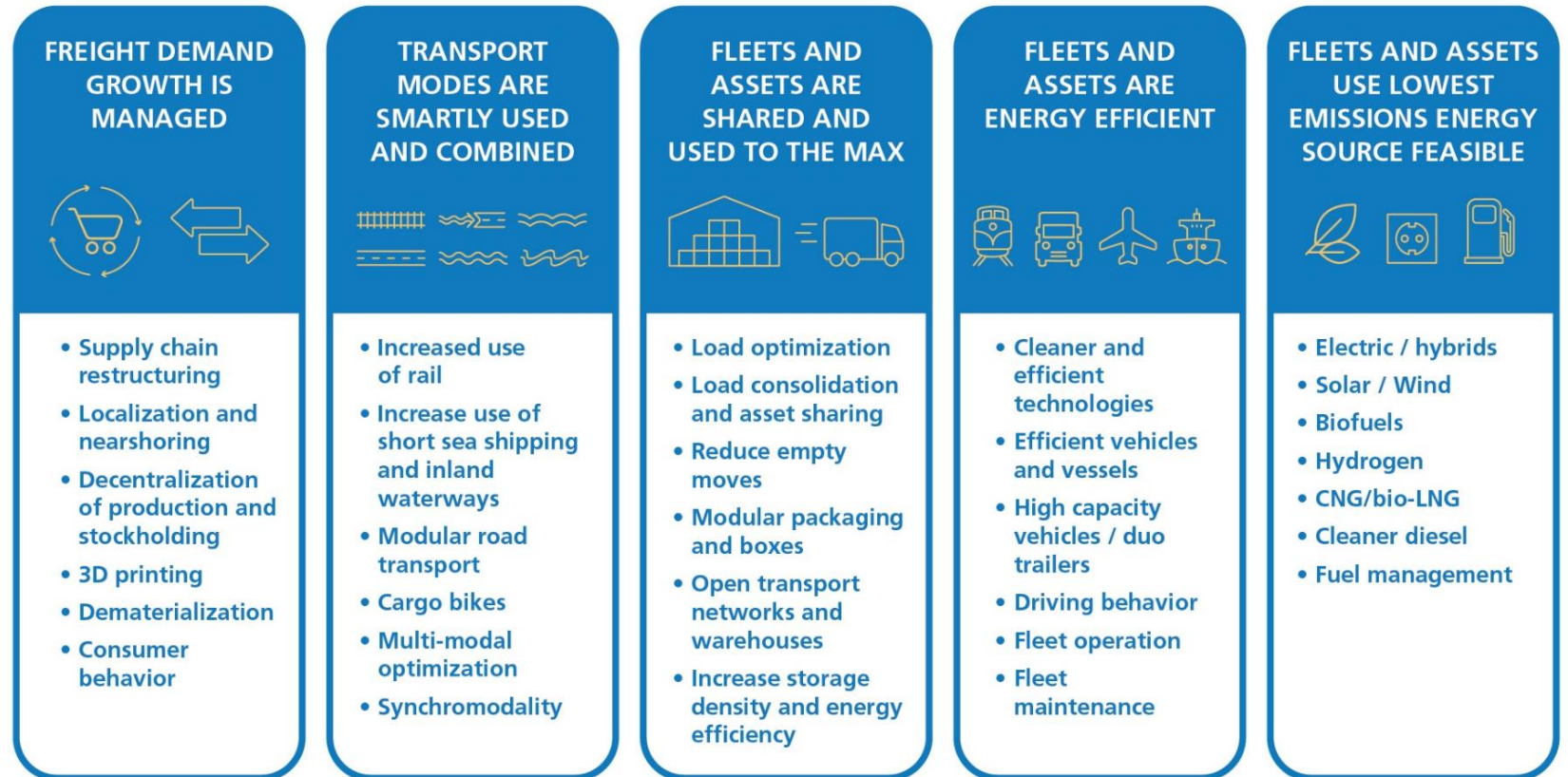


Making assets  
transition affordable!





[Link to the document](#)



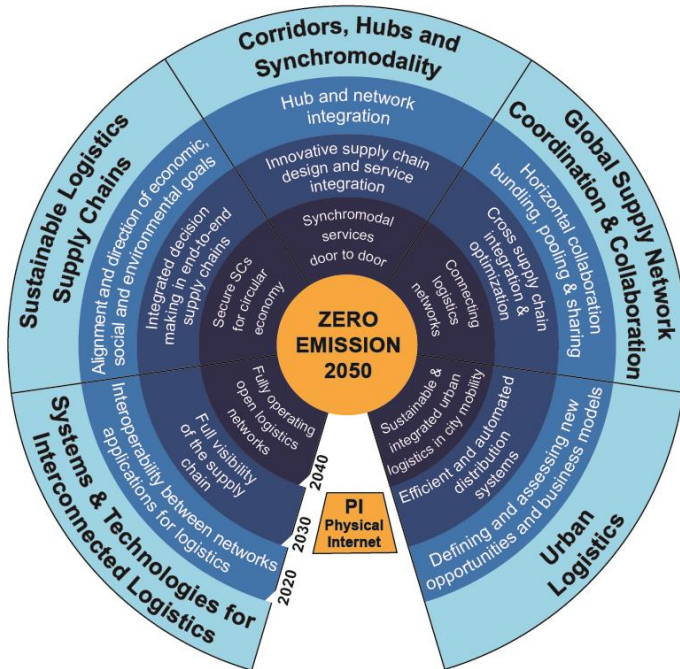
© Smart Freight Centre and ALICE-ETP based on A. McKinnon 'Decarbonizing Logistics' (2018) Roadmap Towards Zero Emissions Logistics 2050. ALICE (2019) www.etp-alice.eu

**Additional  
focus needed**

**Current focus**

**Making assets transition affordable!**



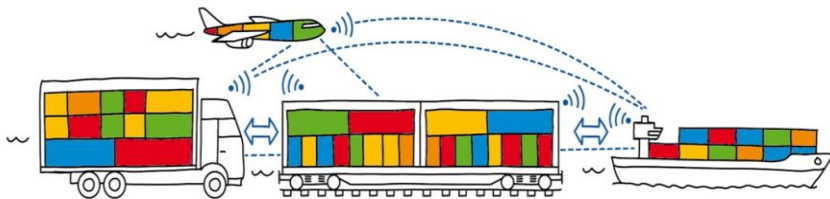


**ALICE VISION:** freight transport and logistics is climate neutral and zero emission. Physical Internet paves the way to achieve this transition in an affordable way

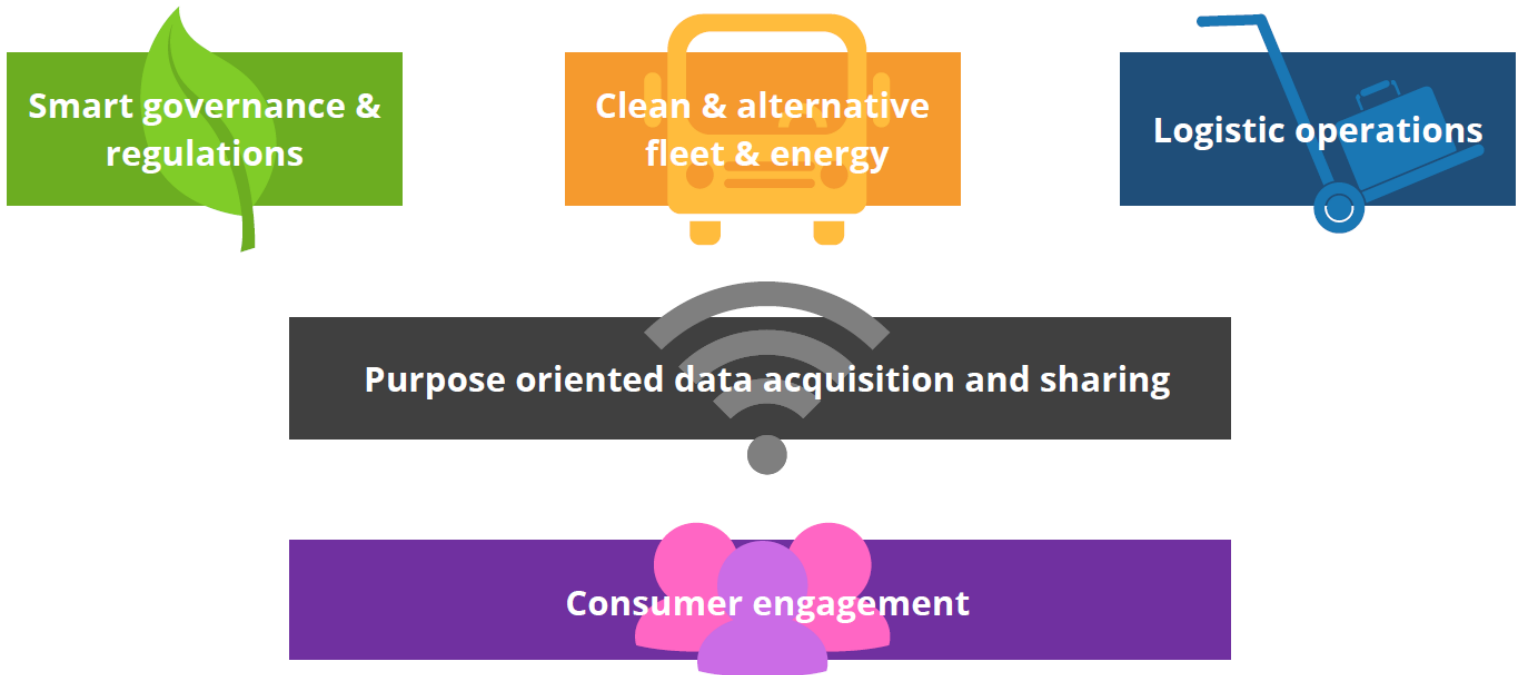
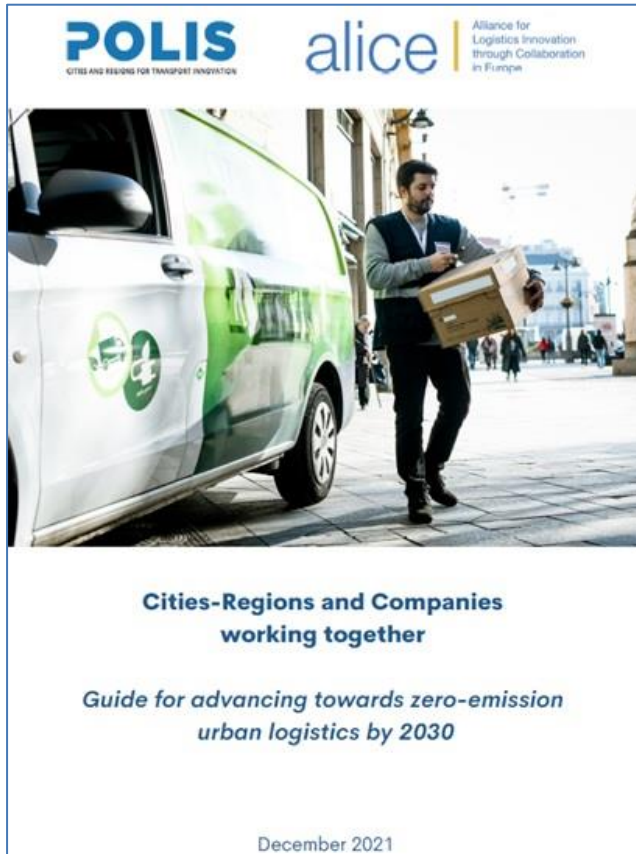
- **Physical Internet (PI)** enables seamless access to resources and assets in open, connected and shared networks
- Enabling companies to seamlessly **consolidate flows and increase assets utilization**.
- PI includes transport, storage and physical handling operations of load units.
- It brings **efficiency, resilience and agility** = savings invested in vehicles and energy transition.
- PI concepts can **deliver results in the critical next 10 years**

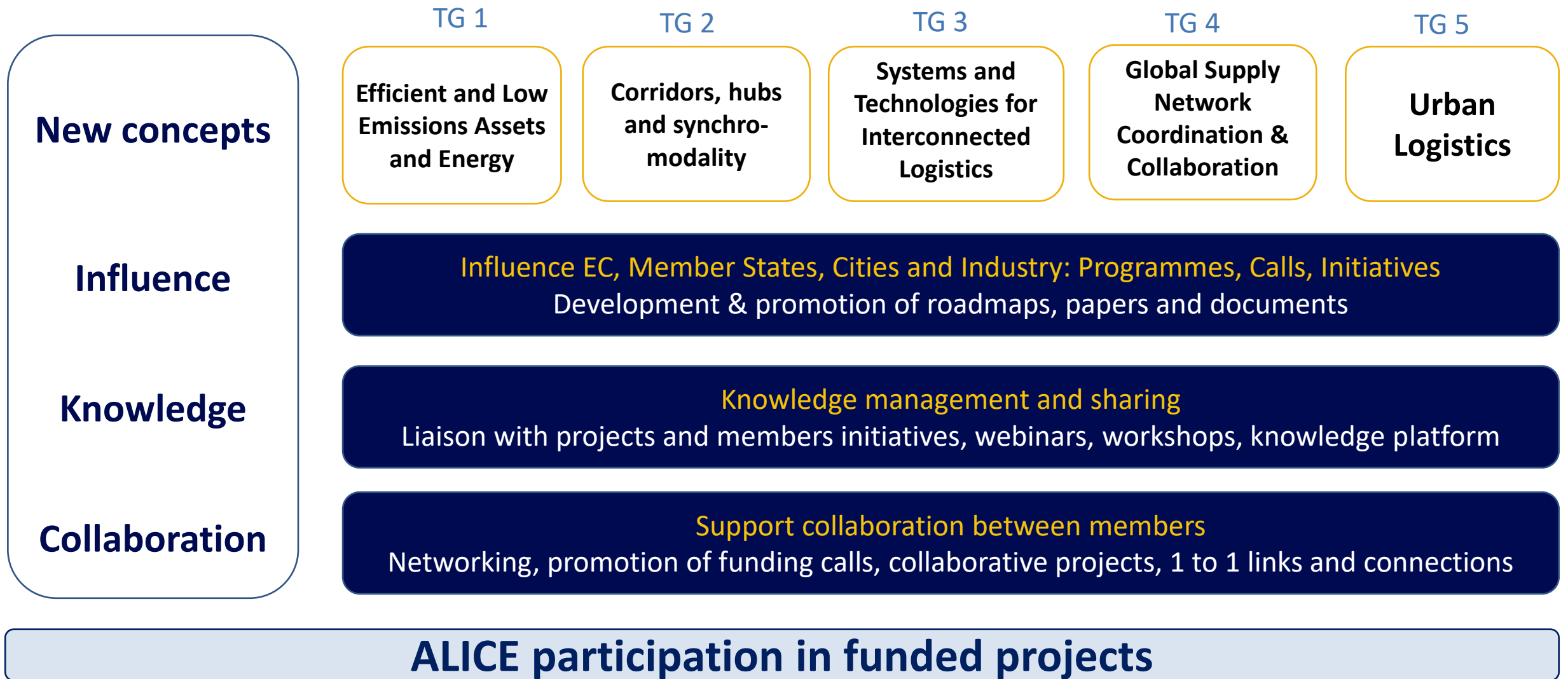
## THE PHYSICAL INTERNET

Interconnected logistics networks, sharing assets and capabilities



# Joint guide advancing towards zero-emissions urban logistics by 2030







## Efficient and Low Emissions Assets and Energy

2ZERO: Zero Emissions Road

Hydrogen Europe

GHG emissions measurement and reporting (SFC)

Low emissions assets availability

## Corridors, hubs and synchro-modality

Europe's Rail Partnership

5th Transport Mode

Air Cargo

Inland Waterways

MoU with Waterborne

Resilient Transport Networks

## Systems and Technologies for Interconnected Logistics

Data sharing, DTLF and eFTI

CCAM-Autonomous Road Transport

Blockchain

Digital Twins

5G

AI

## Global Supply Network Coordination & Collaboration

Targeting & learning

Applied Collaboration streams

## Urban Logistics

Deepen initiatives

Pilot projects with cities

Sharing experiences

## Influence

Development of roadmaps and papers

Vehicle availability

FIT for 55

Increase load optimization

Reduce empty KMs

Carbon profile assessment of EU freight

Urban Logistics

Coordination & Collaboration

Logistics Nodes

Data sharing

Outreach & Promotion

consultations

Events participation

Horizon Europe Funding Calls

## Knowledge management and sharing:

R&I projects Liaison Programme

Knowledge Platform

Webinars and workshops

## Support collaboration between members:

Enable 1 to 1 connections

CEF Calls

Horizon Europe

BOOSTLOG

ENTRANCE

PIONEERS

FENIX

MORE

Proposals preparation

TRA 2022

# ALICE value for members

**Shared vision** to build an innovation eco-system in Supply Chains to accelerate affordable transition towards zero emissions logistics

European **competences** and capabilities in innovation and sustainable Logistics

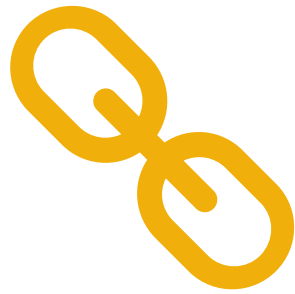
Strong **knowledge management**: Member's initiatives & 60+ R&I projects

Finding the **right people to collaborate**: Sustainability, Innovation and Public Affairs functions enable different discussions than procurement (supplier-customer)

ALICE is the **link to the EC** freight transport and logistics innovation and funding program and can influence EU policies

ALICE is the platform to **brainstorm, network, share new ideas** and support companies in their implementation

# How to become member of ALICE ?



Link to website

<https://www.etp-logistics.eu/how-to-join/>



Application form:

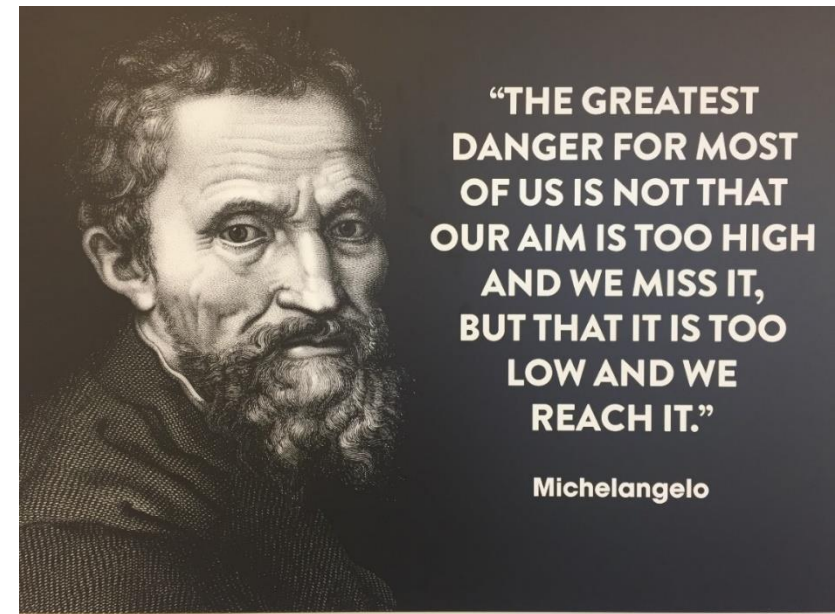
[https://www.etp-logistics.eu/wp-content/uploads/2021/10/ALICE-Membership\\_Form\\_2021.docx](https://www.etp-logistics.eu/wp-content/uploads/2021/10/ALICE-Membership_Form_2021.docx)



# alice

Alliance for  
Logistics Innovation  
through Collaboration  
in Europe

*Thank you!*



## The Best Way To Predict The Future Is To Create It!

*Source: President Abraham Lincoln*



*If you want to go fast, go alone If you want to go far, go together*

[www.etp-alice.eu](http://www.etp-alice.eu)

[info@etp-alice.eu](mailto:info@etp-alice.eu)



[This Photo](#) by Unknown Author is licensed under [CC BY-SA](#)