

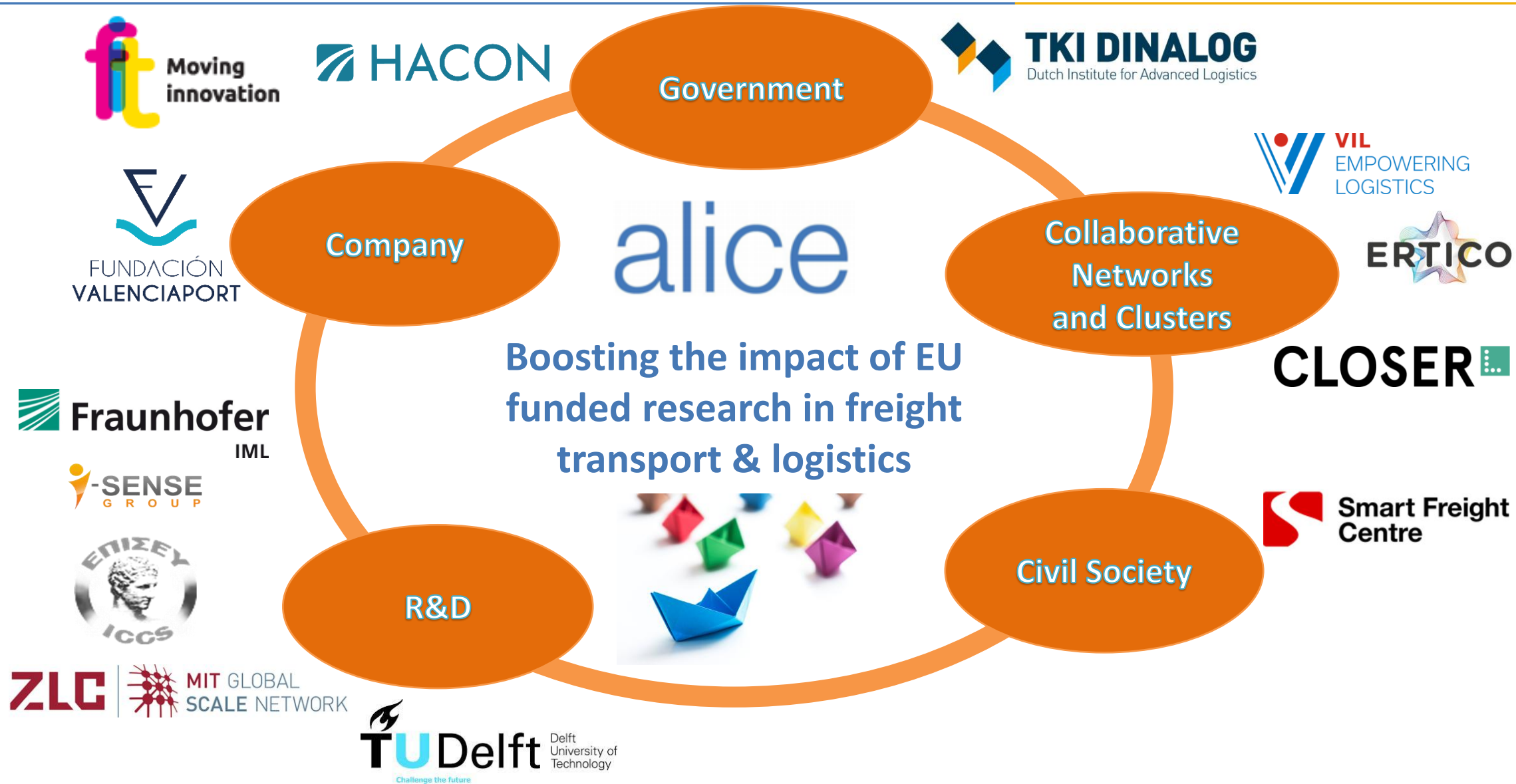
# BOOSTLOG

BOOSTing impact generation from research and innovation on  
integrated freight transport and LOGistics system



- **Project name:** BOOSTing impact generation from research and innovation on integrated freight transport and LOGistics system (**BOOSTLOG**)
- **Starting date:** 1 January 2021
- **Duration:** 36 months
- **Total funding:** 1 M€
- **Project type:** Coordination and Support Action (CSA)
- **Programme:** Horizon 2020
- **Topic:** MG-2-13-2020 - Coordination and support for an integrated freight transport and logistics system





BOOSTLOG Vision is transforming European freight transport and logistics R&I ecosystem to perform optimally boosting impact generation out of R&I investment contributing to EU policy objectives and *Companies* sustainability and competitiveness generating value for society

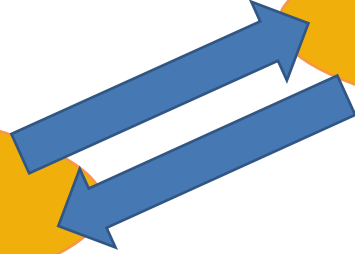
## BOOSTLOG Strategic Objective is:

- To enhance the current **freight transport & logistics R&I ecosystem at regional national and European level.**
- **Speed up the technological and organisational innovation uptake (e.g. EU R&I funded projects results)** for a more efficient, integrated, harmonized and sustainable freight transportation and logistics system
- **Deeply enhancing R&I impact** in support of **EU policy objectives towards** decarbonization, emissions and congestion reduction, ensuring the free and seamless movement of goods and the sector digitalization



Industry Roadmaps

EU Priorities



A European Green Deal



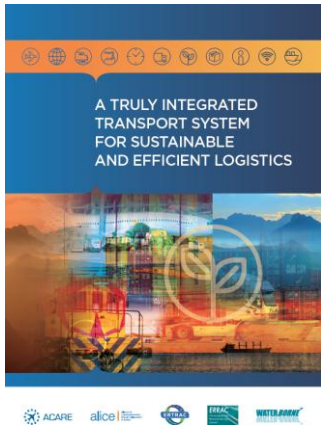
An economy that works for people



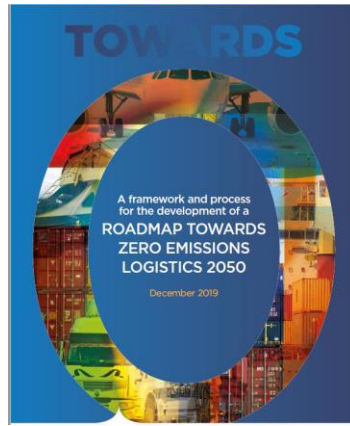
A Europe fit for the digital age



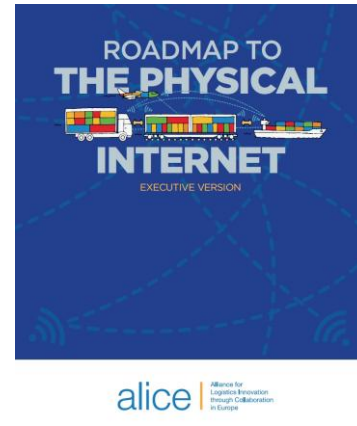
Promoting our European way of life



2016



2019



2020



## Challenges we face:

- EU funded project results (including products, services and solutions) are difficult to find and valorize.
- Regulation, market fragmentation and resistance to change are barriers that slow down the uptake of R&I results by companies and hinder impact generation.
- Attribution of impact as a result of R&I projects and funding is challenging and not well communicated.
- A holistic framework to integrate identification of gaps in R&I and priorities with implementation in R&I funding is missing.
- Strategic and operational engagement of the freight transport and logistics stakeholders with R&I projects needs to be further improved.

Increase visibility and support valorisation of R&I project Results and Outcomes (WP2)

Propose solutions and actions and develop the appropriate framework conditions to accelerate market uptake of R&I results and issue recommendations to increase impact of R&I public funding (WP3)

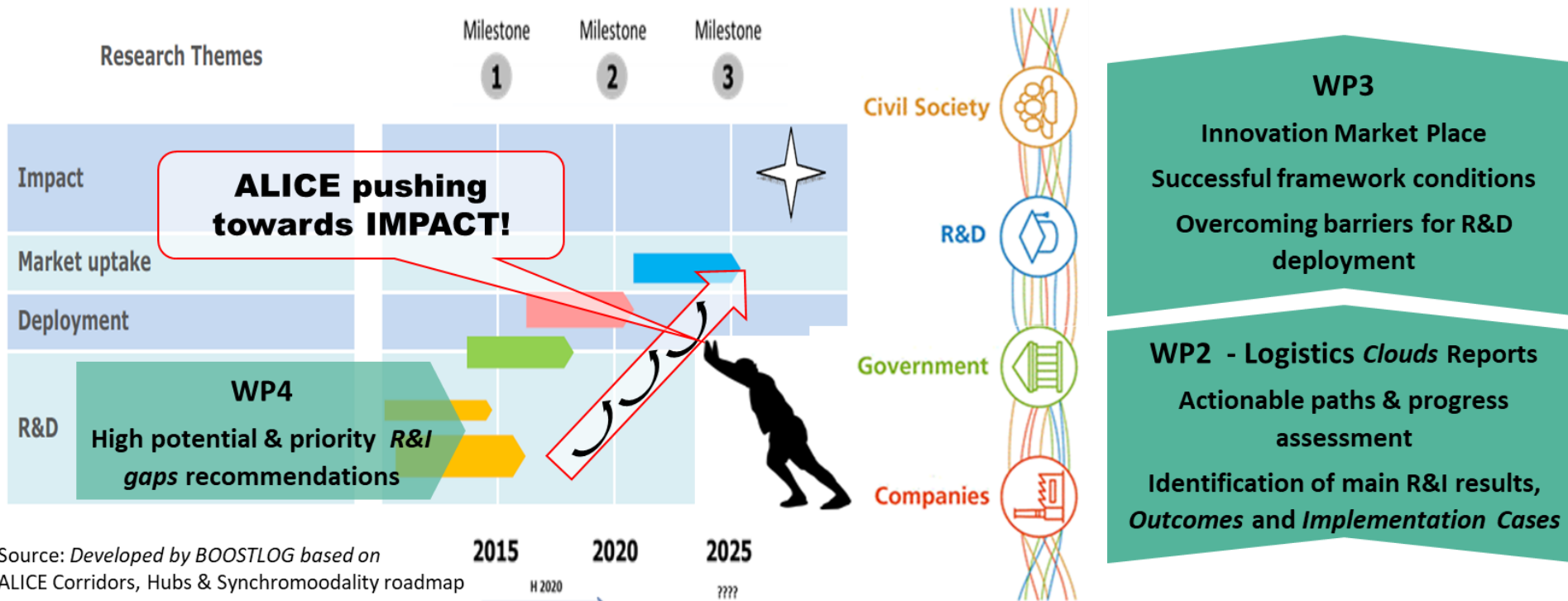
Define high potential & priority R&I gaps to make efficient uses of R&I investments (WP4)

Strengthen R&I impacts communication and Stakeholders engagement in the innovation process (WP5)





## BOOSTLOG will help ALICE to accelerate bridging these levels up

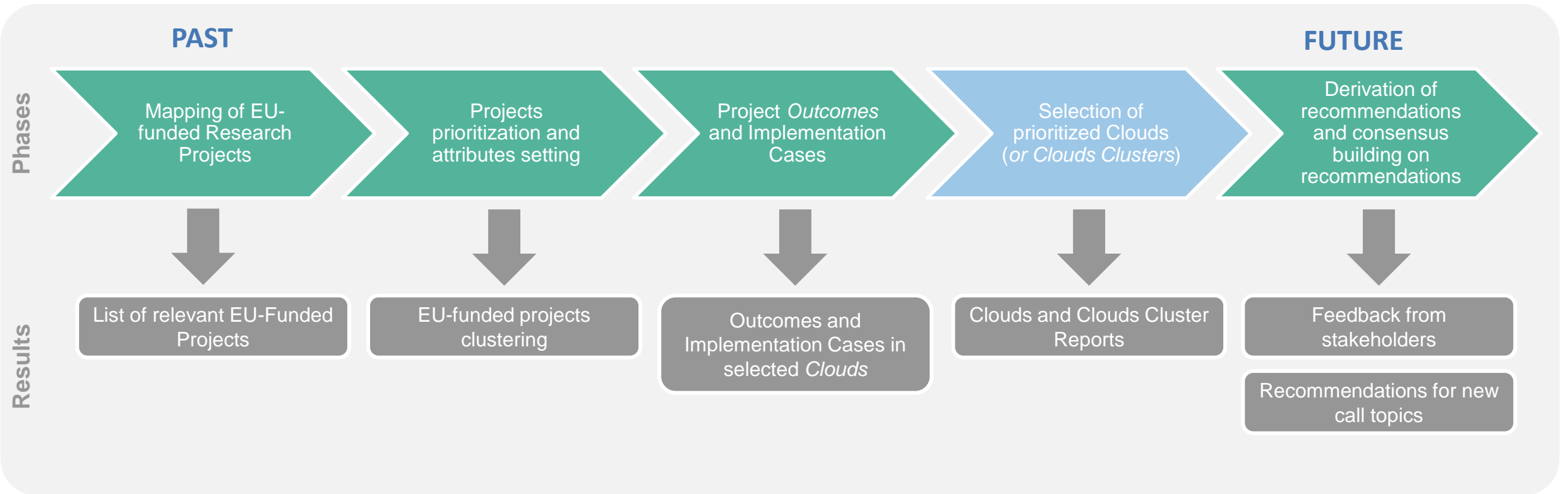


Source: Developed by BOOSTLOG based on ALICE Corridors, Hubs & Synchromodality roadmap

The Quadruple Helix (Carayannis & Campbell, 2011) Roadmap Towards Zero Emissions Logistics 2050. ALICE (2019) www.wetp-alice.eu

**WP5 — Involve, engage and make it irresistible**  
 End users of multimodal freight transport and those less familiar  
 Communicate impact and value, building trust in R&I public funding and society at large

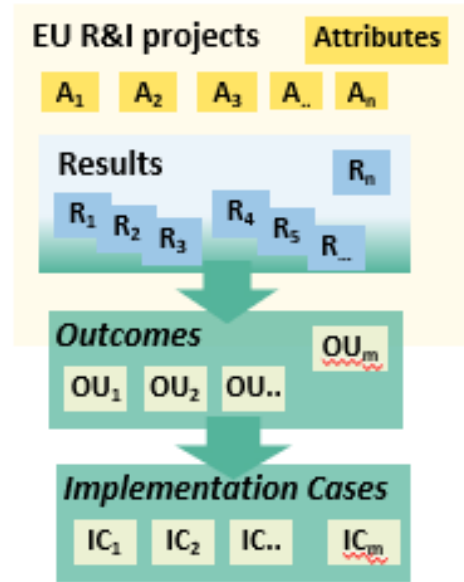






Map the most relevant EU-funded R&D projects

Identify main Outcomes and Implementation cases

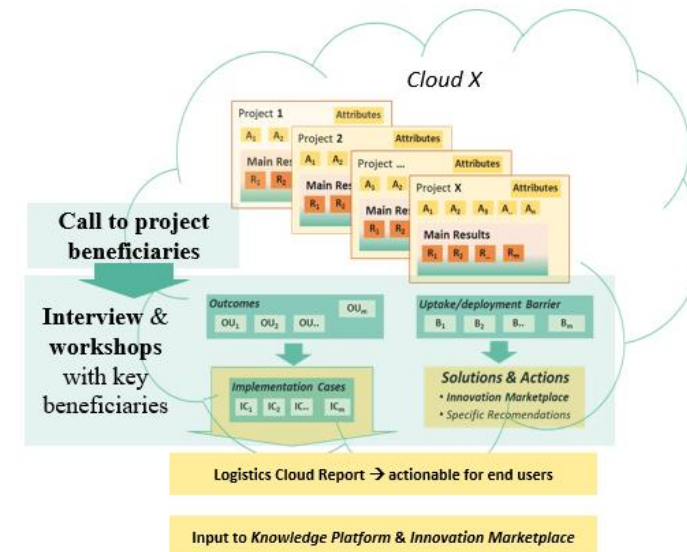


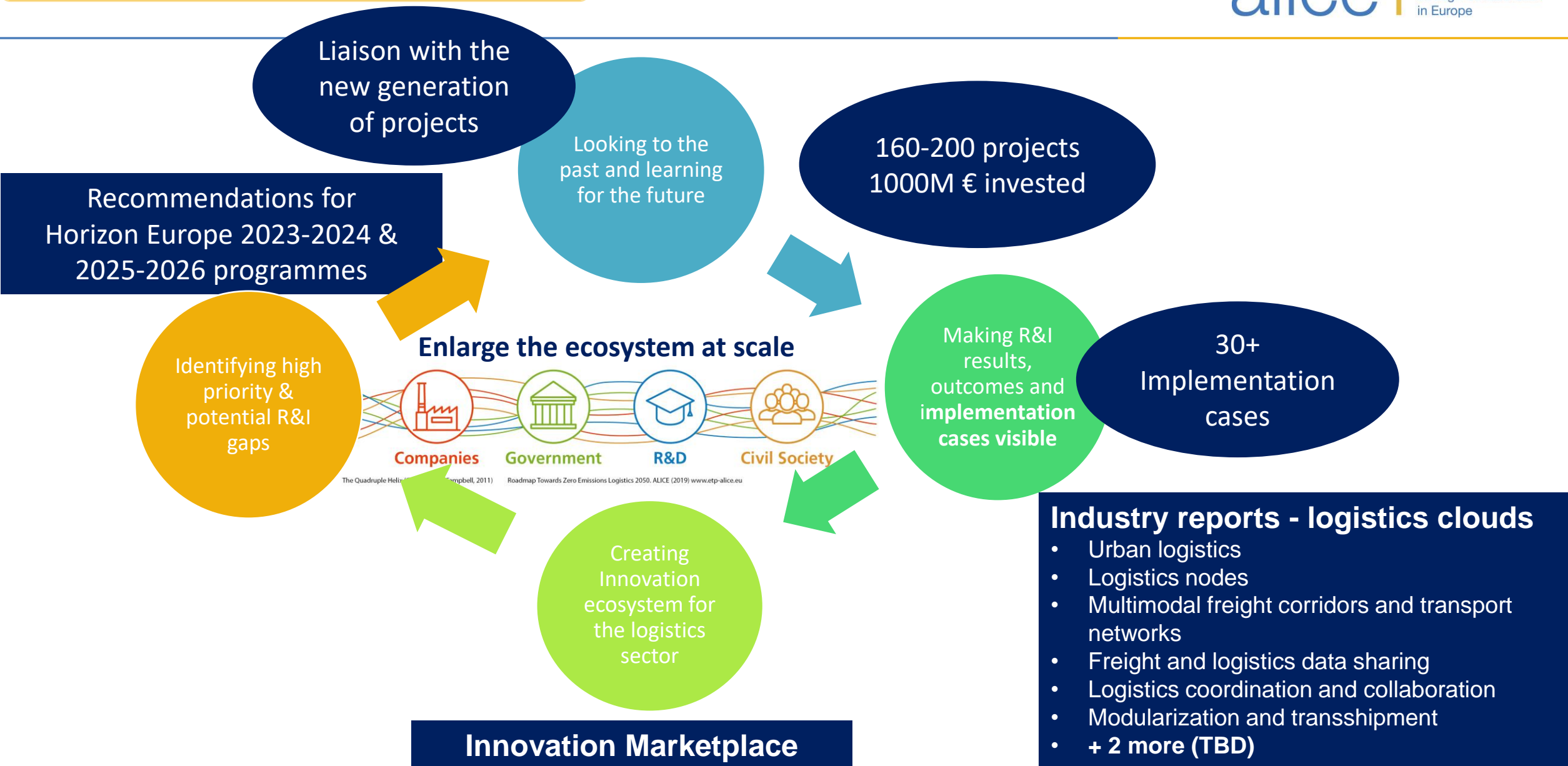
Logistics clouds with higher impact of R&D funding

Barriers and positive framework conditions

### Industry reports - logistics clouds

- Urban logistics
- Logistics nodes
- Multimodal freight corridors and transport networks
- Freight and logistics data sharing
- Logistics coordination and collaboration
- Modularization and transshipment
- + 2 more (TBD)





# Thank you!

For more information please contact:



[info@etp-alice.eu](mailto:info@etp-alice.eu)



<https://etp-logistics.eu/boostlog>



<https://www.linkedin.com/company/alice-logistics/>

